

Product datasheet for **TA333961**

SLC33A1 Rabbit Polyclonal Antibody

Product data:

Product Type:	Primary Antibodies
Applications:	WB
Recommended Dilution:	WB
Reactivity:	Human
Host:	Rabbit
Isotype:	IgG
Clonality:	Polyclonal
Immunogen:	The immunogen for Anti-SLC33A1 Antibody: synthetic peptide directed towards the middle region of human SLC33A1. Synthetic peptide located within the following region: CNSVGQTAGYFLGNVLFALAESADFCNKYLRFQPQPRGIVTLSDFLFFWG
Formulation:	Liquid. Purified antibody supplied in 1x PBS buffer with 0.09% (w/v) sodium azide and 2% sucrose. <i>Note that this product is shipped as lyophilized powder to China customers.</i>
Purification:	Affinity Purified
Conjugation:	Unconjugated
Storage:	Store at -20°C as received.
Stability:	Stable for 12 months from date of receipt.
Predicted Protein Size:	61 kDa
Gene Name:	solute carrier family 33 member 1
Database Link:	NP_004724 Entrez Gene 9197 Human O00400
Background:	SLC33A1 is required for the formation of O-acetylated (Ac) gangliosides. It is predicted to contain 6 to 10 transmembrane domains, and a leucine zipper motif in transmembrane domain III. Studies indicate that the protein is localized to the cytoplasm. The encoded protein is required for the formation of O-acetylated (Ac) gangliosides. It is predicted to contain 6 to 10 transmembrane domains, and a leucine zipper motif in transmembrane domain III. Studies indicate that the protein is localized to the cytoplasm.



[View online »](#)

Synonyms: ACATN; AT-1; AT1; CCHLND; SPG42

Note: Immunogen sequence homology: Rat: 100%; Horse: 100%; Human: 100%; Mouse: 100%; Rabbit: 100%; Dog: 93%; Pig: 93%; Bovine: 93%; Guinea pig: 93%; Zebrafish: 86%

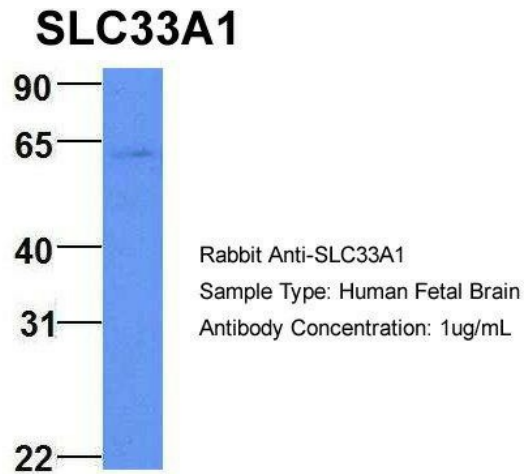
Protein Families: Transmembrane

Protein Pathways: Glycosphingolipid biosynthesis - ganglio series, Metabolic pathways

Product images:

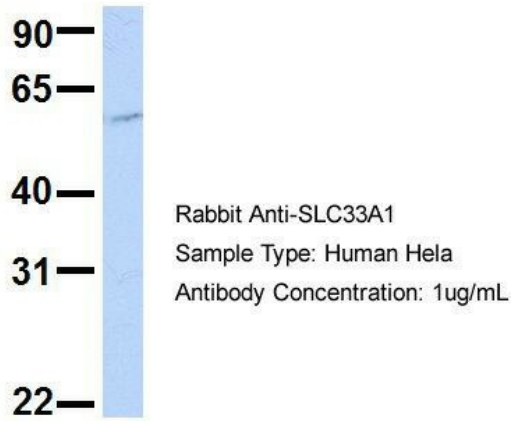


WB Suggested Anti-SLC33A1 Antibody Titration:
0.2-1 ug/ml; ELISA Titer: 1:62500; Positive Control:
Human Placenta



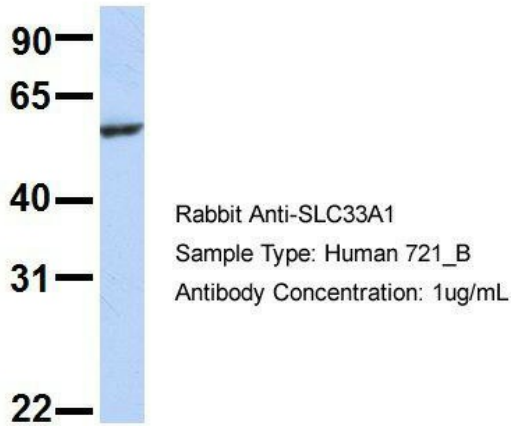
2Hum. Fetal Brain; Host: Rabbit; Target Name:
NOP56; Sample Tissue: Human Fetal Brain;
Antibody Dilution: 1.0 ug/ml

SLC33A1



3Human HeLa; Host: Rabbit; Target Name: EGFL8; Sample Tissue: HeLa; Antibody Dilution: 1.0 ug/ml; SLC33A1 is strongly supported by BioGPS gene expression data to be expressed in Human HeLa cells

SLC33A1



4Human 721_B; Host: Rabbit; Target Name: WT1; Sample Tissue: 721_B; Antibody Dilution: 1.0 ug/ml; SLC33A1 is supported by BioGPS gene expression data to be expressed in 721_B