

Product datasheet for **TA333959**

SLC22A14 Rabbit Polyclonal Antibody

Product data:

Product Type:	Primary Antibodies
Applications:	WB
Recommended Dilution:	WB
Reactivity:	Human
Host:	Rabbit
Isotype:	IgG
Clonality:	Polyclonal
Immunogen:	The immunogen for Anti-SLC22A14 Antibody is: synthetic peptide directed towards the N-terminal region of Human SLC22A14. Synthetic peptide located within the following region: AEQLNLTIPQAPNGSFLTCFMYLPVWNLDSIIQFGLNDTDCQDGWIYP
Formulation:	Liquid. Purified antibody supplied in 1x PBS buffer with 0.09% (w/v) sodium azide and 2% sucrose. <i>Note that this product is shipped as lyophilized powder to China customers.</i>
Purification:	Affinity Purified
Conjugation:	Unconjugated
Storage:	Store at -20°C as received.
Stability:	Stable for 12 months from date of receipt.
Predicted Protein Size:	65 kDa
Gene Name:	solute carrier family 22 member 14
Database Link:	NP_004794 Entrez Gene 9389 Human Q9Y267
Background:	SLC22A14 is a member of the organic-cation transporter family. SLC22A14 is a transmembrane protein which is thought to transport small molecules and since this protein is conserved among several species, it is suggested to have a fundamental role in mammalian systems.
Synonyms:	OCTL2; OCTL4; ORCTL4

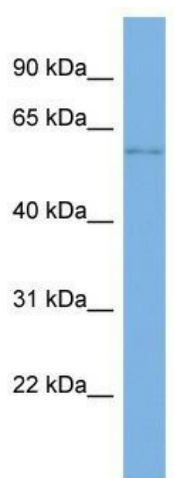


[View online »](#)

Note: Immunogen sequence homology: Human: 100%; Pig: 86%; Rat: 86%; Horse: 86%; Mouse: 86%; Dog: 79%; Bovine: 79%; Guinea pig: 79%

Protein Families: Transmembrane

Product images:



Host: Rabbit; Target Name: SLC22A14; Sample Tissue: Jurkat Whole cell lysates; Antibody Dilution: 1.0 ug/ml