

## Product datasheet for **TA333958**

### SPAG7 Rabbit Polyclonal Antibody

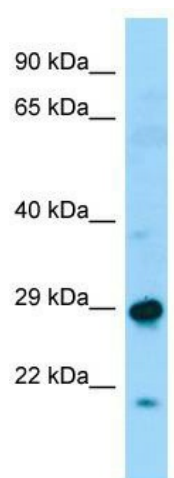
#### Product data:

Product Type:	Primary Antibodies
Applications:	WB
Recommended Dilution:	WB
Reactivity:	Human
Host:	Rabbit
Isotype:	IgG
Clonality:	Polyclonal
Immunogen:	The immunogen for Anti-SPAG7 Antibody is: synthetic peptide directed towards the N-terminal region of Human SPAG7. Synthetic peptide located within the following region: PSLGDQETRRKAREQAARLKKLQEQEKQKVEFRKRMEKEVSDFIQDSGQ
Formulation:	Liquid. Purified antibody supplied in 1x PBS buffer with 0.09% (w/v) sodium azide and 2% sucrose. <i>Note that this product is shipped as lyophilized powder to China customers.</i>
Purification:	Affinity Purified
Conjugation:	Unconjugated
Storage:	Store at -20°C as received.
Stability:	Stable for 12 months from date of receipt.
Predicted Protein Size:	32 kDa
Gene Name:	sperm associated antigen 7
Database Link:	<a href="#">NP_004881</a> <a href="#">Entrez Gene 9552 Human</a> <a href="#">O75391</a>
Background:	The function of this protein remains unknown.
Synonyms:	ACRP; FSA-1
Note:	Immunogen sequence homology: Dog: 100%; Pig: 100%; Rat: 100%; Horse: 100%; Human: 100%; Bovine: 100%; Guinea pig: 100%; Mouse: 93%; Rabbit: 79%



[View online »](#)

## Product images:



WB Suggested Anti-SPAG7 Antibody; Titration: 1.0 ug/ml; Positive Control: Fetal Liver