

## Product datasheet for **TA333956**

### **TIS11B (ZFP36L1) Rabbit Polyclonal Antibody**

#### **Product data:**

Product Type:	Primary Antibodies
Applications:	WB
Recommended Dilution:	WB
Reactivity:	Human
Host:	Rabbit
Isotype:	IgG
Clonality:	Polyclonal
Immunogen:	The immunogen for Anti-ZFP36L1 Antibody: synthetic peptide directed towards the N terminal of human ZFP36L1. Synthetic peptide located within the following region: GGGFPRRHSVTLPSSKFHQQLLSSLKGEPAPALSSRDSRFRDRSFSEGG
Formulation:	Liquid. Purified antibody supplied in 1x PBS buffer with 0.09% (w/v) sodium azide and 2% sucrose. <i>Note that this product is shipped as lyophilized powder to China customers.</i>
Purification:	Affinity Purified
Conjugation:	Unconjugated
Storage:	Store at -20°C as received.
Stability:	Stable for 12 months from date of receipt.
Predicted Protein Size:	36 kDa
Gene Name:	ZFP36 ring finger protein-like 1
Database Link:	<a href="#">NP_004917</a> <a href="#">Entrez Gene 677 Human</a> <a href="#">Q07352</a>



[View online »](#)

**Background:**

ZFP36L1 is a member of the TIS11 family of early response genes. Family members are induced by various agonists such as the phorbol ester TPA and the polypeptide mitogen EGF. The gene is well conserved across species and has a promoter that contains motifs seen in other early-response genes. The encoded protein contains a distinguishing putative zinc finger domain with a repeating cys-his motif. This putative nuclear transcription factor most likely functions in regulating the response to growth factors. This gene is a member of the TIS11 family of early response genes. Family members are induced by various agonists such as the phorbol ester TPA and the polypeptide mitogen EGF. The gene is well conserved across species and has a promoter that contains motifs seen in other early-response genes. The encoded protein contains a distinguishing putative zinc finger domain with a repeating cys-his motif. This putative nuclear transcription factor most likely functions in regulating the response to growth factors.

**Synonyms:**

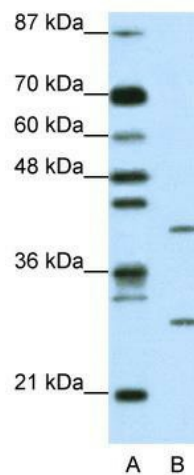
Berg36; BRF1; cMG1; ERF-1; ERF1; RNF162B; TIS11B

**Note:**

Immunogen sequence homology: Bovine: 100%; Dog: 100%; Guinea pig: 100%; Human: 100%; Mouse: 100%; Pig: 100%; Rat: 100%; African clawed frog: 76%

**Protein Families:**

Transcription Factors

**Product images:**

WB Suggested Anti-ZFP36L1 Antibody; Titration: 1.25 ug/ml; Positive Control: Jurkat Whole Cell  
There is BioGPS gene expression data showing that ZFP36L1 is expressed in Jurkat