

Product datasheet for **TA333952**

EAAT4 (SLC1A6) Rabbit Polyclonal Antibody

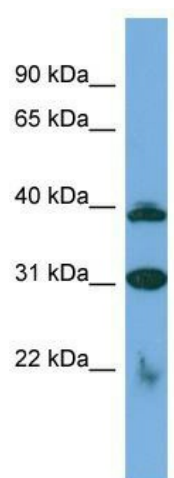
Product data:

Product Type:	Primary Antibodies
Applications:	WB
Recommended Dilution:	WB
Reactivity:	Human
Host:	Rabbit
Isotype:	IgG
Clonality:	Polyclonal
Immunogen:	The immunogen for Anti-SLC1A6 Antibody is: synthetic peptide directed towards the C-terminal region of Human SLC1A6. Synthetic peptide located within the following region: QFKTQYSTRVVRTMVRTENGSEPGASMPPPFVSVENGTSFLENVTRALGT
Formulation:	Liquid. Purified antibody supplied in 1x PBS buffer with 0.09% (w/v) sodium azide and 2% sucrose. <i>Note that this product is shipped as lyophilized powder to China customers.</i>
Purification:	Affinity Purified
Conjugation:	Unconjugated
Storage:	Store at -20°C as received.
Stability:	Stable for 12 months from date of receipt.
Predicted Protein Size:	34 kDa
Gene Name:	solute carrier family 1 member 6
Database Link:	NP_005062 Entrez Gene 6511 Human P48664
Background:	The function of this protein remains unknown.
Synonyms:	EAAT4
Note:	Immunogen sequence homology: Pig: 100%; Rat: 100%; Human: 100%; Mouse: 100%; Rabbit: 100%; Guinea pig: 100%; Dog: 93%; Bovine: 93%; Horse: 92%; Zebrafish: 83%
Protein Families:	Transmembrane



[View online »](#)

Product images:



Host: Rabbit; Target Name: SLC1A6; Sample
Tissue: Jurkat Whole cell lysates; Antibody
Dilution: 1.0 ug/ml