

Product datasheet for TA333951

SLC12A4 Rabbit Polyclonal Antibody

Product data:

Product Type:	Primary Antibodies
Applications:	WB
Recommended Dilution:	WB
Reactivity:	Human
Host:	Rabbit
Isotype:	IgG
Clonality:	Polyclonal
Immunogen:	The immunogen for Anti-SLC12A4 Antibody: synthetic peptide directed towards the N terminal of human SLC12A4. Synthetic peptide located within the following region: MPHFTWVPVDGPRRGDYDNLEGLSWVDYGERAELDDSDGHGHNHRESSPFL
Formulation:	Liquid. Purified antibody supplied in 1x PBS buffer with 0.09% (w/v) sodium azide and 2% sucrose. <i>Note that this product is shipped as lyophilized powder to China customers.</i>
Purification:	Affinity Purified
Conjugation:	Unconjugated
Storage:	Store at -20°C as received.
Stability:	Stable for 12 months from date of receipt.
Predicted Protein Size:	121 kDa
Gene Name:	solute carrier family 12 member 4
Database Link:	NP_005063 Entrez Gene 6560 Human Q9UP95
Background:	This gene encodes a member of the SLC12A transporter family. The encoded protein mediates the coupled movement of potassium and chloride ions across the plasma membrane. This gene is expressed ubiquitously. Multiple alternatively spliced transcript variants encoding distinct isoforms have been found for this gene. [provided by RefSeq, Jan 2013]
Synonyms:	CTC-479C5.17; hKCC1; KCC1

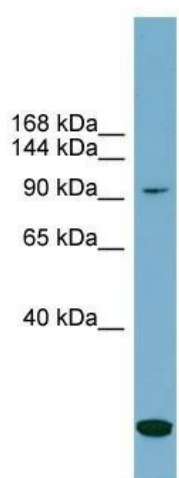


[View online »](#)

Note: Immunogen sequence homology: Dog: 100%; Pig: 100%; Rat: 100%; Horse: 100%; Human: 100%; Mouse: 100%; Sheep: 100%; Bovine: 100%; Rabbit: 100%; Guinea pig: 100%

Protein Families: Transmembrane

Product images:



WB Suggested Anti-SLC12A4 Antibody Titration: 0.2-1 ug/ml; Positive Control: PANC1 cell lysate; There is BioGPS gene expression data showing that SLC12A4 is expressed in PANC1