

Product datasheet for **TA333948**

FEZ2 Rabbit Polyclonal Antibody

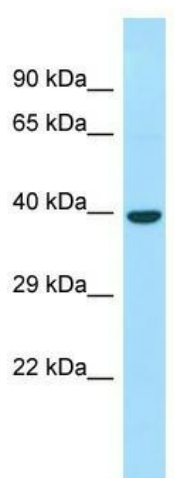
Product data:

Product Type:	Primary Antibodies
Applications:	WB
Recommended Dilution:	WB
Reactivity:	Human
Host:	Rabbit
Isotype:	IgG
Clonality:	Polyclonal
Immunogen:	The immunogen for Anti-FEZ2 Antibody is: synthetic peptide directed towards the C-terminal region of Human FEZ2. Synthetic peptide located within the following region: IEVQNKQKEHKETAKKKKLNKNGSSQNGKNERSHMPGTYLTTVIPYEKKN
Formulation:	Liquid. Purified antibody supplied in 1x PBS buffer with 0.09% (w/v) sodium azide and 2% sucrose.
Purification:	Affinity Purified
Conjugation:	Unconjugated
Storage:	Store at -20°C as received.
Stability:	Stable for 12 months from date of receipt.
Predicted Protein Size:	40 kDa
Gene Name:	fasciculation and elongation protein zeta 2
Database Link:	NP_005093 Entrez Gene 9637 Human Q9UHY8
Background:	This gene is an ortholog of the C. elegans unc-76 gene, which is necessary for normal axonal bundling and elongation within axon bundles. Other orthologs include the rat gene that encodes zygin II, which can bind to synaptotagmin.
Synonyms:	HUM3CL
Note:	Immunogen sequence homology: Dog: 100%; Pig: 100%; Rat: 100%; Human: 100%; Bovine: 100%; Rabbit: 100%; Guinea pig: 92%; Horse: 86%; Mouse: 79%



[View online »](#)

Product images:



WB Suggested Anti-FEZ2 Antibody; Titration: 1.0 ug/ml; Positive Control: Hela Whole cell