

## Product datasheet for **TA333947**

### SLC23A2 Rabbit Polyclonal Antibody

#### Product data:

Product Type:	Primary Antibodies
Applications:	WB
Recommended Dilution:	WB
Reactivity:	Human
Host:	Rabbit
Isotype:	IgG
Clonality:	Polyclonal
Immunogen:	The immunogen for Anti-SLC23A2 Antibody: synthetic peptide directed towards the middle region of human SLC23A2. Synthetic peptide located within the following region: VALIGLSGFQAAGERAGKHWGIAMLTIFLVLLFSQYARNVKFPLPIYKSK
Formulation:	Liquid. Purified antibody supplied in 1x PBS buffer with 0.09% (w/v) sodium azide and 2% sucrose. <i>Note that this product is shipped as lyophilized powder to China customers.</i>
Purification:	Affinity Purified
Conjugation:	Unconjugated
Storage:	Store at -20°C as received.
Stability:	Stable for 12 months from date of receipt.
Predicted Protein Size:	70 kDa
Gene Name:	solute carrier family 23 member 2
Database Link:	<a href="#">NP_005107</a> <a href="#">Entrez Gene 9962 Human</a> <a href="#">Q9UGH3</a>



[View online »](#)

**Background:**

The absorption of vitamin C into the body and its distribution to organs requires two sodium-dependent vitamin C transporters. This gene encodes one of the two required transporters and the encoded protein accounts for tissue-specific uptake of vitamin C. Previously, this gene had an official symbol of SLC23A1. The absorption of vitamin C into the body and its distribution to organs requires two sodium-dependent vitamin C transporters. This gene encodes one of the two required transporters and the encoded protein accounts for tissue-specific uptake of vitamin C. Previously, this gene had an official symbol of SLC23A1.

**Synonyms:**

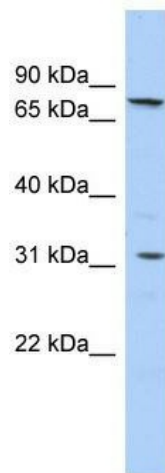
hSVCT2; NBTL1; SLC23A1; SVCT2; YSPL2

**Note:**

Immunogen sequence homology: Dog: 100%; Pig: 100%; Rat: 100%; Horse: 100%; Human: 100%; Mouse: 100%; Bovine: 100%; Rabbit: 100%; Guinea pig: 100%

**Protein Families:**

Transmembrane

**Product images:**

WB Suggested Anti-SLC23A2 Antibody Titration:  
0.2-1 ug/ml; ELISA Titer: 1:312500; Positive  
Control: SH-SY5Y cell lysate