

## Product datasheet for TA333945

### GPR21 Rabbit Polyclonal Antibody

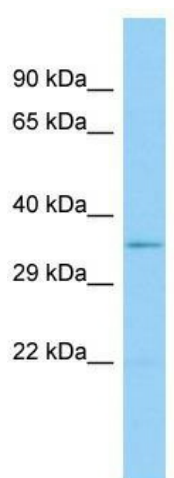
#### Product data:

Product Type:	Primary Antibodies
Applications:	WB
Recommended Dilution:	WB
Reactivity:	Human
Host:	Rabbit
Isotype:	IgG
Clonality:	Polyclonal
Immunogen:	The immunogen for Anti-GPR21 Antibody is: synthetic peptide directed towards the C-terminal region of Human GPR21. Synthetic peptide located within the following region: MMLYAPAALIVCFTYFNIFRICQQHTKDISERQARFSSQSGETGEVQACP
Formulation:	Liquid. Purified antibody supplied in 1x PBS buffer with 0.09% (w/v) sodium azide and 2% sucrose. <i>Note that this product is shipped as lyophilized powder to China customers.</i>
Purification:	Affinity Purified
Conjugation:	Unconjugated
Storage:	Store at -20°C as received.
Stability:	Stable for 12 months from date of receipt.
Predicted Protein Size:	38 kDa
Gene Name:	G protein-coupled receptor 21
Database Link:	<a href="#">NP_005285</a> <a href="#">Entrez Gene 2844 Human Q99679</a>
Background:	GPR21 is a orphan receptor.
Synonyms:	G protein-coupled receptor 21; OTTHUMP00000022075
Note:	Immunogen sequence homology: Human: 100%; Pig: 93%; Rat: 93%; Mouse: 93%; Bovine: 86%
Protein Families:	Druggable Genome, GPCR, Transmembrane



[View online »](#)

## Product images:



Host: Rabbit; Target Name: GPR21; Sample  
Tissue: HT1080 Whole Cell lysates; Antibody  
Dilution: 1.0 ug/ml