

## Product datasheet for **TA333944**

### SLC20A1 Rabbit Polyclonal Antibody

#### Product data:

Product Type:	Primary Antibodies
Applications:	WB
Recommended Dilution:	WB
Reactivity:	Human
Host:	Rabbit
Isotype:	IgG
Clonality:	Polyclonal
Immunogen:	The immunogen for Anti-SLC20A1 Antibody: synthetic peptide directed towards the C terminal of human SLC20A1. Synthetic peptide located within the following region: LVALYLVYDTGDVSSKVATPIWLLLYGGVGICVGLWWWGRRVIQTMGKDL
Formulation:	Liquid. Purified antibody supplied in 1x PBS buffer with 0.09% (w/v) sodium azide and 2% sucrose.
Purification:	Affinity Purified
Conjugation:	Unconjugated
Storage:	Store at -20°C as received.
Stability:	Stable for 12 months from date of receipt.
Predicted Protein Size:	74 kDa
Gene Name:	solute carrier family 20 member 1
Database Link:	<a href="#">NP_005406</a> <a href="#">Entrez Gene 6574 Human</a> <a href="#">Q8WUM9</a>



[View online »](#)

**Background:**

Retrovirus receptors allow infection of human and murine cells by various retroviruses. The receptors that have been identified at the molecular level include CD4 (MIM 186940) for human immunodeficiency virus, Rec1 for murine ecotropic virus, and GLVR1 (SLC20A1) for gibbon ape leukemia virus. These 3 proteins show no homology to one another at the DNA or protein level. GLVR1 is a sodium-dependent phosphate symporter. Retrovirus receptors allow infection of human and murine cells by various retroviruses. The receptors that have been identified at the molecular level include CD4 (MIM 186940) for human immunodeficiency virus, Rec1 for murine ecotropic virus, and GLVR1 for gibbon ape leukemia virus (see MIM 182090). These 3 proteins show no homology to one another at the DNA or protein level. GLVR1 is a sodium-dependent phosphate symporter. [supplied by OMIM]. Publication Note: This RefSeq record includes a subset of the publications that are available for this gene. Please see the Entrez Gene record to access additional publications.

**Synonyms:**

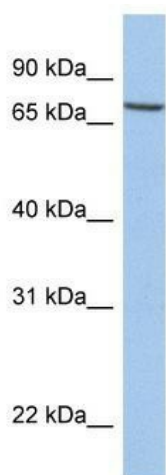
Glv-1; GLVR1; PiT-1; PIT1

**Note:**

Immunogen sequence homology: Dog: 100%; Pig: 100%; Horse: 100%; Human: 100%; Bovine: 100%; Rat: 93%; Rabbit: 93%

**Protein Families:**

Druggable Genome, Transmembrane

**Product images:**


WB Suggested Anti-SLC20A1 Antibody Titration:  
0.2-1 ug/ml; Positive Control: MCF7 cell lysate