

Product datasheet for **TA333943**

PAMCI (RASSF9) Rabbit Polyclonal Antibody

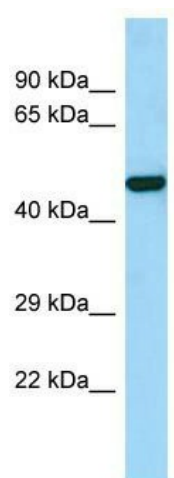
Product data:

Product Type:	Primary Antibodies
Applications:	WB
Recommended Dilution:	WB
Reactivity:	Human
Host:	Rabbit
Isotype:	IgG
Clonality:	Polyclonal
Immunogen:	The immunogen for Anti-RASSF9 Antibody is: synthetic peptide directed towards the C-terminal region of Human RASSF9. Synthetic peptide located within the following region: FHLDRVENDGENYVQDAYLMPSFSEVEQNLDLQYEENQTLEDLSESDGIE
Formulation:	Liquid. Purified antibody supplied in 1x PBS buffer with 0.09% (w/v) sodium azide and 2% sucrose. <i>Note that this product is shipped as lyophilized powder to China customers.</i>
Purification:	Affinity Purified
Conjugation:	Unconjugated
Storage:	Store at -20°C as received.
Stability:	Stable for 12 months from date of receipt.
Predicted Protein Size:	48 kDa
Gene Name:	Ras association domain family member 9
Database Link:	NP_005438 Entrez Gene 9182 Human O75901
Background:	The protein encoded by this gene localizes to perinuclear endosomes. This protein associates with peptidylglycine alpha-amidating monooxygenase, and may be involved with the trafficking of this enzyme through secretory or endosomal pathways.
Synonyms:	P-CIP1; PAMCI; PCIP1
Note:	Immunogen sequence homology: Rat: 100%; Human: 100%; Pig: 83%; Guinea pig: 83%; Rabbit: 79%



[View online »](#)

Product images:



Host: Rabbit; Target Name: RASSF9; Sample
Tissue: U937 Whole Cell lysates; Antibody
Dilution: 1.0 ug/ml