

Product datasheet for **TA333941**

SLC17A4 Rabbit Polyclonal Antibody

Product data:

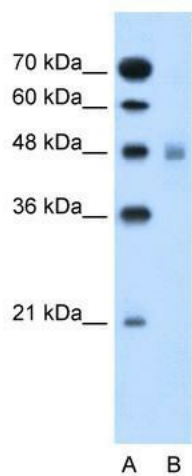
Product Type:	Primary Antibodies
Applications:	IHC, WB
Recommended Dilution:	WB, IHC
Reactivity:	Human
Host:	Rabbit
Isotype:	IgG
Clonality:	Polyclonal
Immunogen:	The immunogen for Anti-SLC17A4 Antibody: synthetic peptide directed towards the middle region of human SLC17A4. Synthetic peptide located within the following region: YFCEYWLFYTIMAYTPTYISSVLQANLRDSGILSALPFVVGICICILGGL
Formulation:	Liquid. Purified antibody supplied in 1x PBS buffer with 0.09% (w/v) sodium azide and 2% sucrose. <i>Note that this product is shipped as lyophilized powder to China customers.</i>
Purification:	Affinity Purified
Conjugation:	Unconjugated
Storage:	Store at -20°C as received.
Stability:	Stable for 12 months from date of receipt.
Predicted Protein Size:	55 kDa
Gene Name:	solute carrier family 17 member 4
Database Link:	NP_005486 Entrez Gene 10050 Human Q9Y2C5
Background:	As a Na/PO4 cotransporter, SLC17A4 may be important to the regulation of Li transport and its therapeutic effects.
Synonyms:	KAIA2138
Note:	Immunogen sequence homology: Rat: 100%; Human: 100%; Mouse: 100%; Horse: 93%; Bovine: 93%; Pig: 79%; Guinea pig: 79%



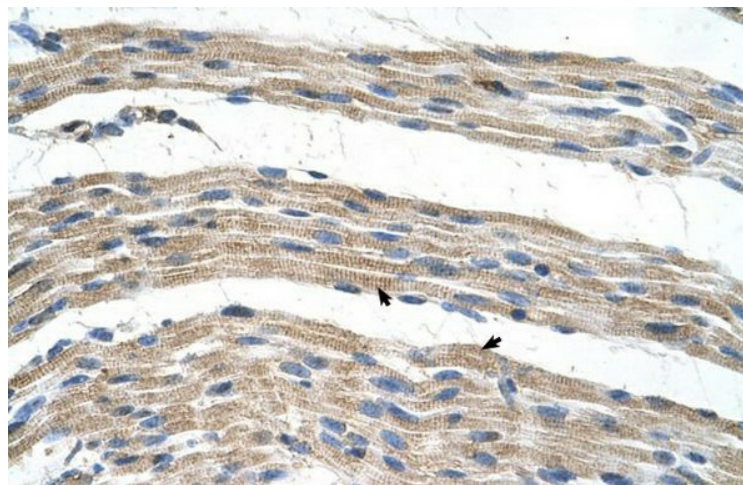
[View online »](#)

Protein Families: Transmembrane

Product images:



WB Suggested Anti-SLC17A4 Antibody Titration:
0.2-1 ug/ml; Positive Control: Jurkat cell lysate



Human Muscle