

Product datasheet for **TA333940**

INPP5A Rabbit Polyclonal Antibody

Product data:

Product Type:	Primary Antibodies
Applications:	WB
Recommended Dilution:	WB
Reactivity:	Human
Host:	Rabbit
Isotype:	IgG
Clonality:	Polyclonal
Immunogen:	The immunogen for Anti-INPP5A Antibody is: synthetic peptide directed towards the C-terminal region of Human INPP5A. Synthetic peptide located within the following region: VVKLIFRESDNDRKVMLQLEKFLFDYFNQEVRDNNGTALLEFDKELSVF
Formulation:	Liquid. Purified antibody supplied in 1x PBS buffer with 0.09% (w/v) sodium azide and 2% sucrose.
Purification:	Affinity Purified
Conjugation:	Unconjugated
Storage:	Store at -20°C as received.
Stability:	Stable for 12 months from date of receipt.
Predicted Protein Size:	43 kDa
Gene Name:	inositol polyphosphate-5-phosphatase A
Database Link:	NP_005530 Entrez Gene 3632 Human Q14642
Background:	The protein encoded by this gene is a membrane-associated type I inositol 1,4,5-trisphosphate (InsP3) 5-phosphatase. InsP3 5-phosphatases hydrolyze Ins(1,4,5)P3, which mobilizes intracellular calcium and acts as a second messenger mediating cell responses to various stimulation.
Synonyms:	5PTASE
Note:	Immunogen sequence homology: Dog: 100%; Pig: 100%; Horse: 100%; Human: 100%; Bovine: 100%; Rat: 93%; Mouse: 93%; Guinea pig: 93%

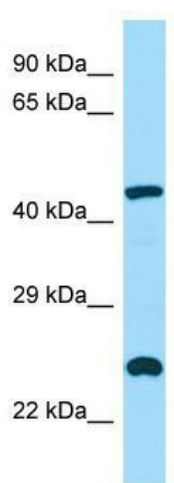


[View online »](#)

Protein Families: Druggable Genome

Protein Pathways: Inositol phosphate metabolism, Metabolic pathways, Phosphatidylinositol signaling system

Product images:



WB Suggested Anti-INPP5A Antibody; Titration: 1.0 ug/ml; Positive Control: HT1080 Whole Cell
INPP5A is supported by BioGPS gene expression data to be expressed in HT1080