

## Product datasheet for **TA333938**

### SOX3 Rabbit Polyclonal Antibody

#### Product data:

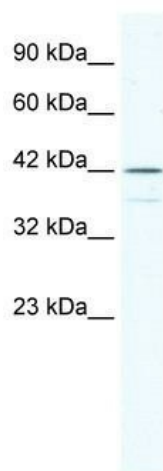
Product Type:	Primary Antibodies
Applications:	WB
Recommended Dilution:	WB
Reactivity:	Human
Host:	Rabbit
Isotype:	IgG
Clonality:	Polyclonal
Immunogen:	The immunogen for Anti-SOX3 Antibody: synthetic peptide directed towards the N terminal of human SOX3. Synthetic peptide located within the following region: LETELKNPVGTPTQAAGTGGPAAPGGAGKSSANAAGGANSGGGSSGGASG
Formulation:	Liquid. Purified antibody supplied in 1x PBS buffer with 0.09% (w/v) sodium azide and 2% sucrose. <i>Note that this product is shipped as lyophilized powder to China customers.</i>
Purification:	Affinity Purified
Conjugation:	Unconjugated
Storage:	Store at -20°C as received.
Stability:	Stable for 12 months from date of receipt.
Predicted Protein Size:	45 kDa
Gene Name:	SRY-box 3
Database Link:	<a href="#">NP_005625</a> <a href="#">Entrez Gene 6658 Human</a> <a href="#">P41225</a>
Background:	SOX3 is a member of the SOX (SRY-related HMG-box) family of transcription factors involved in the regulation of embryonic development and in the determination of the cell fate. The encoded protein may act as a transcriptional regulator after forming a protein complex with other proteins. Mutations in this gene have been associated with X-linked mental retardation with growth hormone deficiency.
Synonyms:	GHDX; MRGH; PHP; PHPX; SOXB



[View online »](#)

**Note:** Immunogen sequence homology: Human: 100%; Pig: 92%; Dog: 85%; Mouse: 85%; Rabbit: 85%

### Product images:



WB Suggested Anti-SOX3 Antibody Titration: 0.2-1 ug/ml; ELISA Titer: 1:2500; Positive Control: Raji cell lysate. SOX3 is supported by BioGPS gene expression data to be expressed in Raji