

Product datasheet for **TA333937**

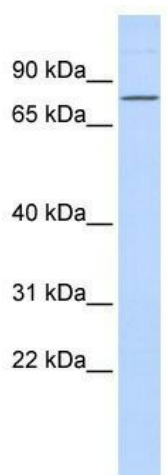
ZNF354A Rabbit Polyclonal Antibody

Product data:

Product Type:	Primary Antibodies
Applications:	WB
Recommended Dilution:	WB
Reactivity:	Human
Host:	Rabbit
Isotype:	IgG
Clonality:	Polyclonal
Immunogen:	The immunogen for Anti-ZNF354A Antibody: synthetic peptide directed towards the middle region of human ZNF354A. Synthetic peptide located within the following region: CSLCEKTFINTSSLRKHEKNHSGEKLFKCKECSKAFSQSSALIQHQTHT
Formulation:	Liquid. Purified antibody supplied in 1x PBS buffer with 0.09% (w/v) sodium azide and 2% sucrose.
Purification:	Affinity Purified
Conjugation:	Unconjugated
Storage:	Store at -20°C as received.
Stability:	Stable for 12 months from date of receipt.
Predicted Protein Size:	69 kDa
Gene Name:	zinc finger protein 354A
Database Link:	NP_005640 Entrez Gene 6940 Human O60765
Background:	ZNF354A belongs to the krueppel C2H2-type zinc-finger protein family. It contains 13 C2H2-type zinc fingers and 1 KRAB domain.
Synonyms:	EZNF; HEL104; HKL1; KID-1; KID1; TCF17
Note:	Immunogen sequence homology: Dog: 100%; Pig: 100%; Rat: 100%; Horse: 100%; Human: 100%; Mouse: 100%; Bovine: 100%; Rabbit: 100%; Zebrafish: 79%; Guinea pig: 77%
Protein Families:	Transcription Factors



[View online »](#)

Product images:

WB Suggested Anti-ZNF354A Antibody Titration: 0.2-1 ug/ml; ELISA Titer: 1:62500; Positive Control: 293T cell lysate ZNF354A is supported by BioGPS gene expression data to be expressed in HEK293T