

Product datasheet for **TA333934**

ARL4C Rabbit Polyclonal Antibody

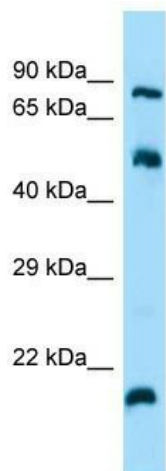
Product data:

Product Type:	Primary Antibodies
Applications:	WB
Recommended Dilution:	WB
Reactivity:	Human
Host:	Rabbit
Isotype:	IgG
Clonality:	Polyclonal
Immunogen:	The immunogen for Anti-ARL4C Antibody is: synthetic peptide directed towards the N-terminal region of Human ARL4C. Synthetic peptide located within the following region: NTVPTIGFNTEKIKLSNGTAKGISCHFWDVGGQEKLRLWKSYSRCTDGI
Formulation:	Liquid. Purified antibody supplied in 1x PBS buffer with 0.09% (w/v) sodium azide and 2% sucrose.
Purification:	Affinity Purified
Conjugation:	Unconjugated
Storage:	Store at -20°C as received.
Stability:	Stable for 12 months from date of receipt.
Predicted Protein Size:	21 kDa
Gene Name:	ADP ribosylation factor like GTPase 4C
Database Link:	NP_005728 Entrez Gene 10123 Human P56559
Background:	ADP-ribosylation factor-like 4C is a member of the ADP-ribosylation factor family of GTP-binding proteins. ARL4C is closely similar to ARL4A and ARL4D and each has a nuclear localization signal and an unusually high guanine nucleotide exchange rate. This protein may play a role in cholesterol transport.
Synonyms:	ARL7; LAK

[View online »](#)

Note: Immunogen sequence homology: Dog: 100%; Pig: 100%; Rat: 100%; Goat: 100%; Horse: 100%; Human: 100%; Mouse: 100%; Sheep: 100%; Bovine: 100%; Rabbit: 100%; Zebrafish: 100%; Guinea pig: 100%

Product images:



Host: Rabbit; Target Name: ARL4C; Sample Tissue: HT1080 Whole Cell lysates; Antibody Dilution: 1.0 ug/ml; There is BioGPS gene expression data showing that ARL4C is expressed in HT1080