

## Product datasheet for **TA333932**

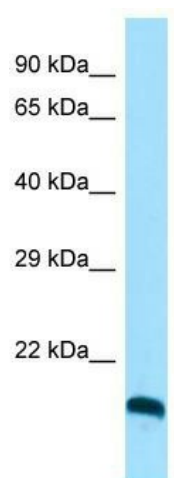
### CLEC3A Rabbit Polyclonal Antibody

#### Product data:

Product Type:	Primary Antibodies
Applications:	WB
Recommended Dilution:	WB
Reactivity:	Human
Host:	Rabbit
Isotype:	IgG
Clonality:	Polyclonal
Immunogen:	The immunogen for Anti-CLEC3A Antibody is: synthetic peptide directed towards the C-terminal region of Human CLEC3A. Synthetic peptide located within the following region: GKFVDVNGIAISFLNWDRAQPNGGKRENCVLFSQSAQGKWSDEACRSSKR
Formulation:	Liquid. Purified antibody supplied in 1x PBS buffer with 0.09% (w/v) sodium azide and 2% sucrose. <i>Note that this product is shipped as lyophilized powder to China customers.</i>
Purification:	Affinity Purified
Conjugation:	Unconjugated
Storage:	Store at -20°C as received.
Stability:	Stable for 12 months from date of receipt.
Predicted Protein Size:	22 kDa
Gene Name:	C-type lectin domain family 3 member A
Database Link:	<a href="#">NP_005743</a> <a href="#">Entrez Gene 10143 Human O75596</a>
Background:	CLEC3A promotes cell adhesion to laminin-332 and fibronectin.
Synonyms:	CLECSF1
Note:	Immunogen sequence homology: Rat: 100%; Human: 100%; Mouse: 100%; Pig: 93%; Horse: 93%; Bovine: 93%; Guinea pig: 93%; Dog: 86%; Rabbit: 86%; Zebrafish: 79%



[View online »](#)

**Product images:**

Host: Rabbit; Target Name: CLEC3A; Sample  
Tissue: HepG2 Whole Cell lysates; Antibody  
Dilution: 1.0 ug/ml