

Product datasheet for TA333931

SLC35B1 Rabbit Polyclonal Antibody

Product data:

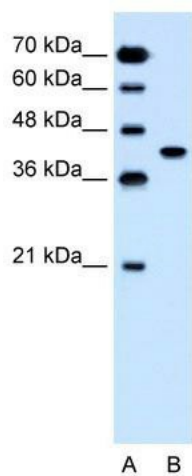
Product Type:	Primary Antibodies
Applications:	WB
Recommended Dilution:	WB
Reactivity:	Human
Host:	Rabbit
Isotype:	IgG
Clonality:	Polyclonal
Immunogen:	The immunogen for Anti-SLC35B1 Antibody: synthetic peptide directed towards the C terminal of human SLC35B1. Synthetic peptide located within the following region: ALGQSFIFMTVVYFGPLTCSIITTRKFFILASVILFANPISPMQWVGT
Formulation:	Liquid. Purified antibody supplied in 1x PBS buffer with 0.09% (w/v) sodium azide and 2% sucrose. <i>Note that this product is shipped as lyophilized powder to China customers.</i>
Purification:	Affinity Purified
Conjugation:	Unconjugated
Storage:	Store at -20°C as received.
Stability:	Stable for 12 months from date of receipt.
Predicted Protein Size:	35 kDa
Gene Name:	solute carrier family 35 member B1
Database Link:	NP_005818 Entrez Gene 10237 Human P78383
Background:	SLC35B1 belongs to the nucleotide-sugar transporter family and it is probable sugar transporter.
Synonyms:	UGTREL1
Note:	Immunogen sequence homology: Dog: 100%; Pig: 100%; Rat: 100%; Horse: 100%; Human: 100%; Mouse: 100%; Bovine: 100%; Rabbit: 100%; Guinea pig: 100%; Zebrafish: 86%



[View online »](#)

Protein Families: Transmembrane

Product images:



WB Suggested Anti-SLC35B1 Antibody Titration:
1.25 ug/ml; Positive Control: Jurkat cell lysate