

Product datasheet for **TA333930**

Citrate transport protein (SLC25A1) Rabbit Polyclonal Antibody

Product data:

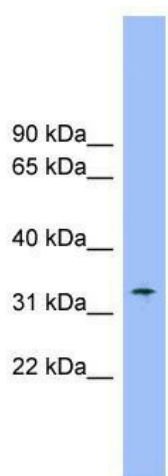
Product Type:	Primary Antibodies
Applications:	WB
Recommended Dilution:	WB
Reactivity:	Human
Host:	Rabbit
Isotype:	IgG
Clonality:	Polyclonal
Immunogen:	The immunogen for Anti-SLC25A1 Antibody: synthetic peptide directed towards the middle region of human SLC25A1. Synthetic peptide located within the following region: NKPMNPLITGVFGAIGAASVFGNTPLDVIKTRMQGLEAHKYRNTWDCGL
Formulation:	Liquid. Purified antibody supplied in 1x PBS buffer with 0.09% (w/v) sodium azide and 2% sucrose.
Purification:	Affinity Purified
Conjugation:	Unconjugated
Storage:	Store at -20°C as received.
Stability:	Stable for 12 months from date of receipt.
Predicted Protein Size:	34 kDa
Gene Name:	solute carrier family 25 member 1
Database Link:	NP_005975 Entrez Gene 6576 Human P53007
Background:	The mitochondrial tricarboxylate transporter (also called citrate transport protein, or CTP) is responsible for the movement of citrate across the mitochondrial inner membrane (summarized by Kaplan et al., 1993 [PubMed 8514800]).
Synonyms:	CTP; D2L2AD; SEA; SLC20A3
Note:	Immunogen sequence homology: Dog: 100%; Pig: 100%; Rat: 100%; Horse: 100%; Human: 100%; Mouse: 100%; Yeast: 100%; Bovine: 100%; Rabbit: 100%; Zebrafish: 100%; Guinea pig: 100%



[View online »](#)

Protein Families: Druggable Genome

Product images:



WB Suggested Anti-SLC25A1 Antibody Titration:
0.2-1 ug/ml; Positive Control: Human Stomach