

## Product datasheet for TA333929

### SNAIL (SNAI1) Rabbit Polyclonal Antibody

#### Product data:

Product Type:	Primary Antibodies
Applications:	WB
Recommended Dilution:	WB
Reactivity:	Human
Host:	Rabbit
Isotype:	IgG
Clonality:	Polyclonal
Immunogen:	The immunogen for Anti-SNAI1 Antibody is: synthetic peptide directed towards the N-terminal region of Human SNAI1. Synthetic peptide located within the following region: RKPSDPNRKPNYSELQDSNPEFTFQQPYDQAHLAAIPPPEILNPTASLP
Formulation:	Liquid. Purified antibody supplied in 1x PBS buffer with 0.09% (w/v) sodium azide and 2% sucrose. <i>Note that this product is shipped as lyophilized powder to China customers.</i>
Purification:	Affinity Purified
Conjugation:	Unconjugated
Storage:	Store at -20°C as received.
Stability:	Stable for 12 months from date of receipt.
Predicted Protein Size:	29 kDa
Gene Name:	snail family transcriptional repressor 1
Database Link:	<a href="#">NP_005976</a> <a href="#">Entrez Gene 6615 Human</a> <a href="#">O95863</a>
Background:	The Drosophila embryonic protein snail is a zinc finger transcriptional repressor which downregulates the expression of ectodermal genes within the mesoderm. The nuclear protein encoded by this gene is structurally similar to the Drosophila snail protein, and is also thought to be critical for mesoderm formation in the developing embryo. At least two variants of a similar processed pseudogene have been found on chromosome 2.
Synonyms:	dj710H13.1; SLUGH2; SNA; SNAH; SNAIL; SNAIL1



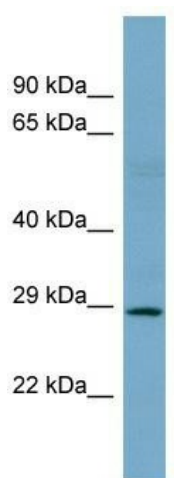
[View online »](#)

**Note:** Immunogen sequence homology: Human: 100%; Rat: 92%; Pig: 85%; Horse: 85%; Guinea pig: 85%; Bovine: 77%

**Protein Families:** Druggable Genome

**Protein Pathways:** Adherens junction

### Product images:



Host: Rabbit; Target Name: SNAI1; Sample Tissue: NCI-H226 Whole cell lysates; Antibody Dilution: 1.0 ug/ml