

Product datasheet for **TA333928**

SNAIL (SNAI1) Rabbit Polyclonal Antibody

Product data:

Product Type:	Primary Antibodies
Applications:	IHC, WB
Recommended Dilution:	WB, IHC
Reactivity:	Human, Mouse
Host:	Rabbit
Isotype:	IgG
Clonality:	Polyclonal
Immunogen:	The immunogen for Anti-SNAI1 Antibody: synthetic peptide directed towards the N terminal of human SNAI1. Synthetic peptide located within the following region: MPRSFLVRKPSDPNRKPNYSELQSDNPEFTFQQPYDQAHLAAIPPPEIL
Formulation:	Liquid. Purified antibody supplied in 1x PBS buffer with 0.09% (w/v) sodium azide and 2% sucrose.
Purification:	Affinity Purified
Conjugation:	Unconjugated
Storage:	Store at -20°C as received.
Stability:	Stable for 12 months from date of receipt.
Predicted Protein Size:	29 kDa
Gene Name:	snail family transcriptional repressor 1
Database Link:	NP_005976 Entrez Gene 20613 Mouse Entrez Gene 6615 Human O95863
Background:	The Drosophila embryonic protein snail is a zinc finger transcriptional repressor which downregulates the expression of ectodermal genes within the mesoderm. The nuclear protein encoded by this gene is structurally similar to the Drosophila snail protein, and is also thought to be critical for mesoderm formation in the developing embryo.
Synonyms:	dj710H13.1; SLUGH2; SNA; SNAH; SNAIL; SNAIL1
Note:	Immunogen sequence homology: Pig: 100%; Rat: 100%; Human: 100%; Guinea pig: 100%; Mouse: 93%



[View online »](#)

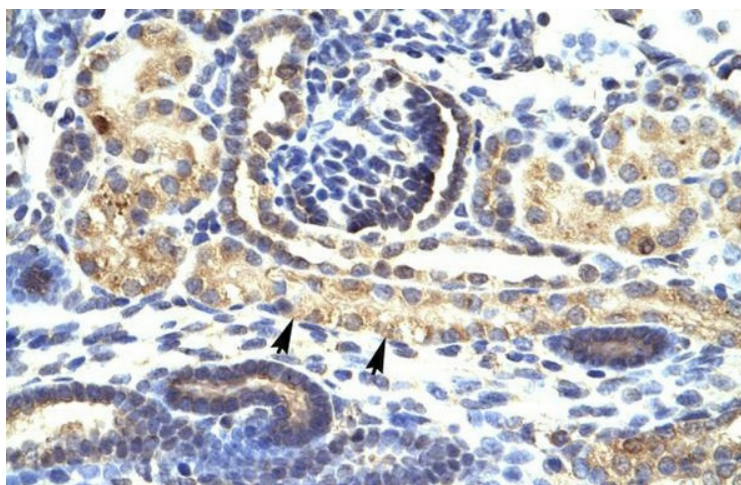
Protein Families: Druggable Genome

Protein Pathways: Adherens junction

Product images:



WB Suggested Anti-SNAI1 Antibody Titration: 1 ug/ml; Positive Control: 721_B cell lysate. SNAI1 is supported by BioGPS gene expression data to be expressed in 721_B.



Human kidney