

Product datasheet for **TA333922**

TSG101 Rabbit Polyclonal Antibody

Product data:

Product Type:	Primary Antibodies
Applications:	WB
Recommended Dilution:	WB
Reactivity:	Human
Host:	Rabbit
Isotype:	IgG
Clonality:	Polyclonal
Immunogen:	The immunogen for Anti-TSG101 Antibody is: synthetic peptide directed towards the N-terminal region of Human TSG101. Synthetic peptide located within the following region: YKYRDLTVRETVNVITLYKDLKPVLDYSYVFNDGSSRELMNLTGTIPVPYR
Formulation:	Liquid. Purified antibody supplied in 1x PBS buffer with 0.09% (w/v) sodium azide and 2% sucrose. <i>Note that this product is shipped as lyophilized powder to China customers.</i>
Purification:	Affinity Purified
Conjugation:	Unconjugated
Storage:	Store at -20°C as received.
Stability:	Stable for 12 months from date of receipt.
Predicted Protein Size:	44 kDa
Gene Name:	tumor susceptibility 101
Database Link:	NP_006283 Entrez Gene 7251 Human Q99816



[View online »](#)

Background:

The protein encoded by this gene belongs to a group of apparently inactive homologs of ubiquitin-conjugating enzymes. The gene product contains a coiled-coil domain that interacts with stathmin, a cytosolic phosphoprotein implicated in tumorigenesis. The protein may play a role in cell growth and differentiation and act as a negative growth regulator. In vitro steady-state expression of this tumor susceptibility gene appears to be important for maintenance of genomic stability and cell cycle regulation. Mutations and alternative splicing in this gene occur in high frequency in breast cancer and suggest that defects occur during breast cancer tumorigenesis and/or progression.

Synonyms:

TSG10; VPS23

Note:

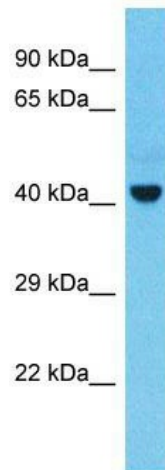
Immunogen sequence homology: Dog: 100%; Pig: 100%; Rat: 100%; Goat: 100%; Human: 100%; Bovine: 100%; Rabbit: 100%; Guinea pig: 100%; Horse: 93%; Mouse: 93%; Zebrafish: 85%

Protein Families:

Druggable Genome, Transcription Factors

Protein Pathways:

Endocytosis

Product images:

Host: Rabbit; Target Name: TSG101; Sample Tissue: Thymus tumor lysates; Antibody Dilution: 1.0 ug/ml