

Product datasheet for **TA333920**

COLEC10 Rabbit Polyclonal Antibody

Product data:

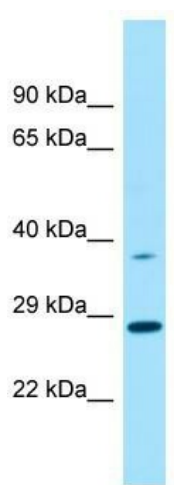
Product Type:	Primary Antibodies
Applications:	WB
Recommended Dilution:	WB
Reactivity:	Human
Host:	Rabbit
Isotype:	IgG
Clonality:	Polyclonal
Immunogen:	The immunogen for Anti-COLEC10 Antibody is: synthetic peptide directed towards the N-terminal region of Human COLEC10. Synthetic peptide located within the following region: IKGELGDMGDQGNIGKTGPIGKKGDKGEKGLLGIPGEKGKAGTVCDGCRY
Formulation:	Liquid. Purified antibody supplied in 1x PBS buffer with 0.09% (w/v) sodium azide and 2% sucrose. <i>Note that this product is shipped as lyophilized powder to China customers.</i>
Purification:	Affinity Purified
Conjugation:	Unconjugated
Storage:	Store at -20°C as received.
Stability:	Stable for 12 months from date of receipt.
Predicted Protein Size:	30 kDa
Gene Name:	collectin subfamily member 10
Database Link:	NP_006429 Entrez Gene 10584 Human Q9Y6Z7
Background:	This gene encodes a member of the C-lectin family, proteins that possess collagen-like sequences and carbohydrate recognition domains. The other members of this family are secreted proteins and bind to carbohydrate antigens on microorganisms facilitating their recognition and removal. This gene product is a cytosolic protein, a characteristic that suggests that it may have different biological functions than other C-lectins.
Synonyms:	CL-34; CLL1



[View online »](#)

Note: Immunogen sequence homology: Pig: 100%; Rat: 100%; Horse: 100%; Human: 100%; Mouse: 100%; Bovine: 100%; Guinea pig: 100%; Dog: 93%; Rabbit: 93%

Product images:



Host: Rabbit; Target Name: COLEC10; Sample
Tissue: U937 Whole Cell lysates; Antibody
Dilution: 1.0 ug/ml