

Product datasheet for **TA333919**

OATP2 (SLCO1B1) Rabbit Polyclonal Antibody

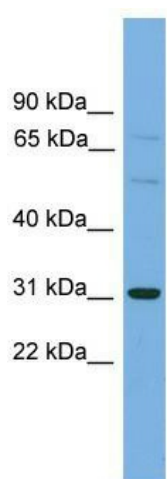
Product data:

Product Type:	Primary Antibodies
Applications:	WB
Recommended Dilution:	WB
Reactivity:	Human
Host:	Rabbit
Isotype:	IgG
Clonality:	Polyclonal
Immunogen:	The immunogen for Anti-SLCO1B1 Antibody: synthetic peptide directed towards the middle region of human SLCO1B1. Synthetic peptide located within the following region: IILYAMKKKYQEKDINASENGSVMDEANLESLNKNKHFVPSAGADSETH
Formulation:	Liquid. Purified antibody supplied in 1x PBS buffer with 0.09% (w/v) sodium azide and 2% sucrose. <i>Note that this product is shipped as lyophilized powder to China customers.</i>
Purification:	Affinity Purified
Conjugation:	Unconjugated
Storage:	Store at -20°C as received.
Stability:	Stable for 12 months from date of receipt.
Predicted Protein Size:	76 kDa
Gene Name:	solute carrier organic anion transporter family member 1B1
Database Link:	NP_006437 Entrez Gene 10599 Human Q9Y6L6



[View online »](#)

Background:	This gene encodes a liver-specific member of the organic anion transporter family. The encoded protein is a transmembrane receptor that mediates the sodium-independent uptake of numerous endogenous compounds including bilirubin, 17-beta-glucuronosyl estradiol and leukotriene C4. This protein is also involved in the removal of drug compounds such as statins, bromosulfophthalein and rifampin from the blood into the hepatocytes. Polymorphisms in the gene encoding this protein are associated with impaired transporter function.
Synonyms:	HBLRR; LST-1; LST1; OATP-C; OATP1B1; OATP2; OATPC; SLC21A6
Note:	Immunogen sequence homology: Human: 100%; Bovine: 86%; Pig: 79%
Protein Families:	Druggable Genome, Transmembrane

Product images:

WB Suggested Anti-SLCO1B1 Antibody Titration:
0.2-1 ug/ml; ELISA Titer: 1:1562500; Positive
Control: HepG2 cell lysate