

Product datasheet for **TA333914**

TCEA1 Rabbit Polyclonal Antibody

Product data:

Product Type:	Primary Antibodies
Applications:	WB
Recommended Dilution:	WB
Reactivity:	Human
Host:	Rabbit
Isotype:	IgG
Clonality:	Polyclonal
Immunogen:	The immunogen for Anti-TCEA1 Antibody: synthetic peptide directed towards the N terminal of human TCEA1. Synthetic peptide located within the following region: KSWKKLLDGPSTEKDLDEKKKEPAITSQNSPEAREESTSSGNVSNRKDET
Formulation:	Liquid. Purified antibody supplied in 1x PBS buffer with 0.09% (w/v) sodium azide and 2% sucrose. <i>Note that this product is shipped as lyophilized powder to China customers.</i>
Purification:	Affinity Purified
Conjugation:	Unconjugated
Storage:	Store at -20°C as received.
Stability:	Stable for 12 months from date of receipt.
Predicted Protein Size:	34 kDa
Gene Name:	transcription elongation factor A1
Database Link:	NP_006747 Entrez Gene 6917 Human P23193
Background:	TCEA1 is necessary for efficient RNA polymerase II transcription elongation past template-encoded arresting sites. TCEA1 has a role in suppression of transient pausing, which is the most important contribution of TCEA1 to elongation from a stall position. TCEA1 fuse to PLAG1 protein which is overexpressed in epithelial, myoepithelial, and mesenchymal-like tumor cells in tumors.
Synonyms:	GTF2S; SII; TCEA; TF2S; TFIS

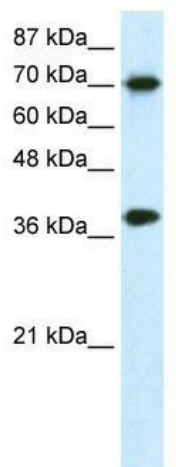


[View online »](#)

Note: Immunogen sequence homology: Human: 100%; Rat: 93%; Rabbit: 93%; Pig: 86%; Mouse: 86%; Guinea pig: 86%; Dog: 79%; Horse: 79%

Protein Families: Transcription Factors

Product images:



WB Suggested Anti-TCEA1 Antibody Titration: 0.2-1 ug/ml; Positive Control: Transfected 293T