

## Product datasheet for **TA333913**

### BTG2 Rabbit Polyclonal Antibody

#### Product data:

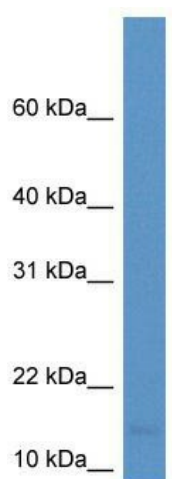
Product Type:	Primary Antibodies
Applications:	WB
Recommended Dilution:	WB
Reactivity:	Human
Host:	Rabbit
Isotype:	IgG
Clonality:	Polyclonal
Immunogen:	The immunogen for Anti-BTG2 Antibody: synthetic peptide directed towards the middle region of human BTG2. Synthetic peptide located within the following region: HKMDPIISRVASQIGLSQPQLHQLLPSELTLWVDPYEVSYRIGEDGSICV
Formulation:	Liquid. Purified antibody supplied in 1x PBS buffer with 0.09% (w/v) sodium azide and 2% sucrose. <i>Note that this product is shipped as lyophilized powder to China customers.</i>
Purification:	Affinity Purified
Conjugation:	Unconjugated
Storage:	Store at -20°C as received.
Stability:	Stable for 12 months from date of receipt.
Predicted Protein Size:	17 kDa
Gene Name:	BTG family member 2
Database Link:	<a href="#">NP_006754</a> <a href="#">Entrez Gene 7832 Human P78543</a>
Background:	BTG2 is an anti-proliferative protein. BTG2 modulates transcription regulation mediated by ESR1.
Synonyms:	APRO1; PC3; TIS21
Note:	Immunogen sequence homology: Rat: 100%; Human: 100%; Dog: 92%; Pig: 92%; Mouse: 92%; Sheep: 92%; Bovine: 92%; Guinea pig: 92%; Horse: 85%; Rabbit: 85%



[View online »](#)

Protein Families: Transcription Factors

**Product images:**



WB Suggested Anti-BTG2 Antibody Titration: 0.2-1 ug/ml; Positive Control: Human Lung