

## Product datasheet for **TA333912**

### BTG2 Rabbit Polyclonal Antibody

#### Product data:

Product Type:	Primary Antibodies
Applications:	WB
Recommended Dilution:	WB
Reactivity:	Human
Host:	Rabbit
Isotype:	IgG
Clonality:	Polyclonal
Immunogen:	The immunogen for Anti-BTG2 Antibody: synthetic peptide directed towards the N terminal of human BTG2. Synthetic peptide located within the following region: MSHGKGTDMLEIAAAGFLSSLRTRGCVSEQLKVFSGALQEALTEHY
Formulation:	Liquid. Purified antibody supplied in 1x PBS buffer with 0.09% (w/v) sodium azide and 2% sucrose. <i>Note that this product is shipped as lyophilized powder to China customers.</i>
Purification:	Affinity Purified
Conjugation:	Unconjugated
Storage:	Store at -20°C as received.
Stability:	Stable for 12 months from date of receipt.
Predicted Protein Size:	17 kDa
Gene Name:	BTG family member 2
Database Link:	<a href="#">NP_006754</a> <a href="#">Entrez Gene 7832 Human</a> <a href="#">P78543</a>
Background:	BTG2 is an anti-proliferative protein. BTG2 modulates transcription regulation mediated by ESR1. The protein encoded by this gene is a member of the BTG/Tob family. This family has structurally related proteins that appear to have antiproliferative properties. This encoded protein is involved in the regulation of the G1/S transition of the cell cycle. Publication Note: This RefSeq record includes a subset of the publications that are available for this gene. Please see the Entrez Gene record to access additional publications.



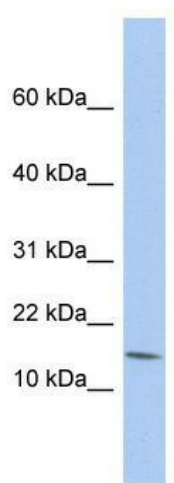
[View online »](#)

**Synonyms:** APRO1; PC3; TIS21

**Note:** Immunogen sequence homology: Pig: 100%; Rat: 100%; Human: 100%; Rabbit: 100%; Dog: 92%; Guinea pig: 92%; Mouse: 85%

**Protein Families:** Transcription Factors

### Product images:



WB Suggested Anti-BTG2 Antibody Titration: 0.2-1 ug/ml; Positive Control: ACHN cell lysate BTG2 is strongly supported by BioGPS gene expression data to be expressed in Human ACHN cells