

Product datasheet for **TA333911**

PDI (PDIA2) Rabbit Polyclonal Antibody

Product data:

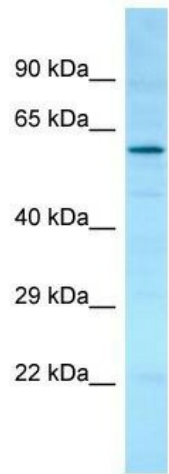
Product Type:	Primary Antibodies
Applications:	WB
Recommended Dilution:	WB
Reactivity:	Human
Host:	Rabbit
Isotype:	IgG
Clonality:	Polyclonal
Immunogen:	The immunogen for Anti-PDIA2 Antibody is: synthetic peptide directed towards the N-terminal region of Human PDIA2. Synthetic peptide located within the following region: EFGVTEYPTLKFFRNGNRTHPEEYTGPRDAEGIAEWLRRRVGPSAMRLED
Formulation:	Liquid. Purified antibody supplied in 1x PBS buffer with 0.09% (w/v) sodium azide and 2% sucrose. <i>Note that this product is shipped as lyophilized powder to China customers.</i>
Purification:	Affinity Purified
Conjugation:	Unconjugated
Storage:	Store at -20°C as received.
Stability:	Stable for 12 months from date of receipt.
Predicted Protein Size:	56 kDa
Gene Name:	protein disulfide isomerase family A member 2
Database Link:	NP_006840 Entrez Gene 64714 Human Q13087
Background:	Protein disulfide isomerases, such as PDIP, are endoplasmic reticulum (ER) resident proteins that catalyze protein folding and thiol-disulfide interchange reactions.
Synonyms:	PDA2; PDI; PDIP; PDIR
Note:	Immunogen sequence homology: Human: 100%; Bovine: 100%; Pig: 93%; Dog: 92%; Horse: 86%; Guinea pig: 86%; Rat: 85%; Mouse: 85%



[View online »](#)

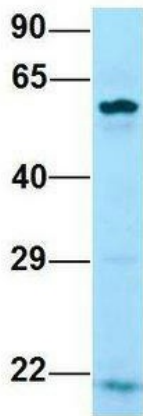
Protein Families: Druggable Genome

Product images:



WB Suggested Anti-PDIA2 Antibody; Titration: 1.0 ug/ml; Positive Control: Hela Whole Cell

PDIA2



Rabbit Anti-PDIA2
 Sample Type: Human Adult Placenta
 Antibody Concentration: 1ug/mL

Host: Rabbit; Target Name: PDIA2; Sample Tissue: Human Adult Placenta; Antibody Dilution: 1.0 ug/ml