

Product datasheet for **TA333906**

SOX10 Rabbit Polyclonal Antibody

Product data:

Product Type:	Primary Antibodies
Applications:	IHC, WB
Recommended Dilution:	WB, IHC
Reactivity:	Human
Host:	Rabbit
Isotype:	IgG
Clonality:	Polyclonal
Immunogen:	The immunogen for Anti-SOX10 Antibody: synthetic peptide directed towards the middle region of human SOX10. Synthetic peptide located within the following region: PGGEAEQGGTAAIQAHYKSAHLDRHPGEGSPMSDGNPEHPGQSHGPPT
Formulation:	Liquid. Purified antibody supplied in 1x PBS buffer with 0.09% (w/v) sodium azide and 2% sucrose. <i>Note that this product is shipped as lyophilized powder to China customers.</i>
Purification:	Affinity Purified
Conjugation:	Unconjugated
Storage:	Store at -20°C as received.
Stability:	Stable for 12 months from date of receipt.
Predicted Protein Size:	50 kDa
Gene Name:	SRY-box 10
Database Link:	NP_008872 Entrez Gene 6663 Human P56693
Background:	SOX10 is a member of the SOX (SRY-related HMG-box) family of transcription factors involved in the regulation of embryonic development and in the determination of the cell fate. This protein may act as a transcriptional activator after forming a protein complex with other proteins. It acts as a nucleocytoplasmic shuttle protein and is important for neural crest and peripheral nervous system development. Mutations in this gene are associated with Waardenburg-Shah and Waardenburg-Hirschsprung disease.



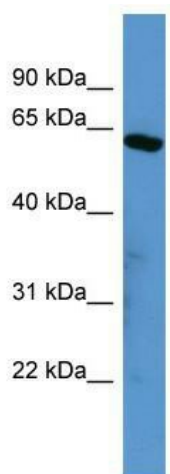
[View online »](#)

Synonyms: DOM; PCWH; WS2E; WS4; WS4C

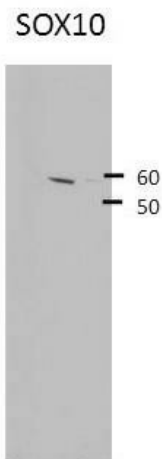
Note: Immunogen sequence homology: Human: 100%; Dog: 93%; Pig: 93%; Horse: 93%; Mouse: 93%; Bovine: 93%; Rabbit: 93%; Guinea pig: 93%; Rat: 86%

Protein Families: Adult stem cells, ES Cell Differentiation/IPS, Induced pluripotent stem cells, Transcription Factors

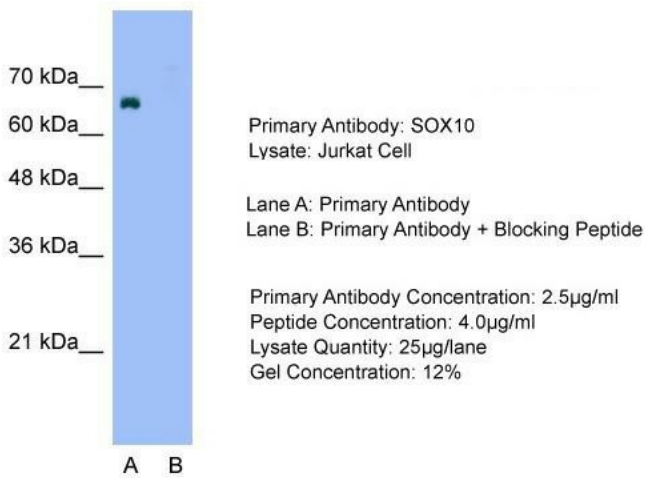
Product images:



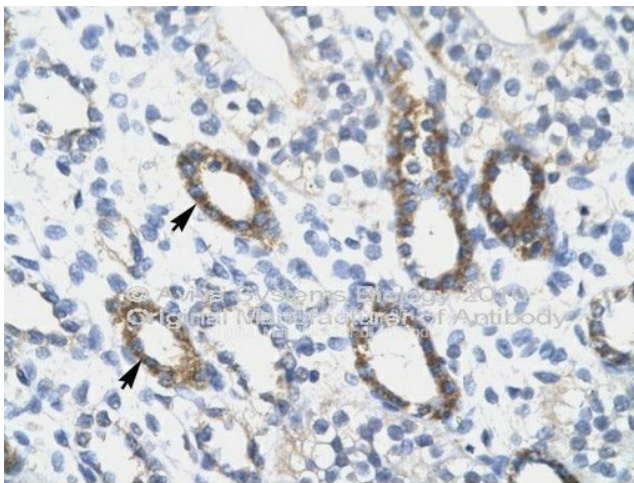
WB Suggested Anti-SOX10Antibody Titration: 0.25 ug/ml; ELISA Titer: 1:62500; Positive Control: HepG2 cell lysate



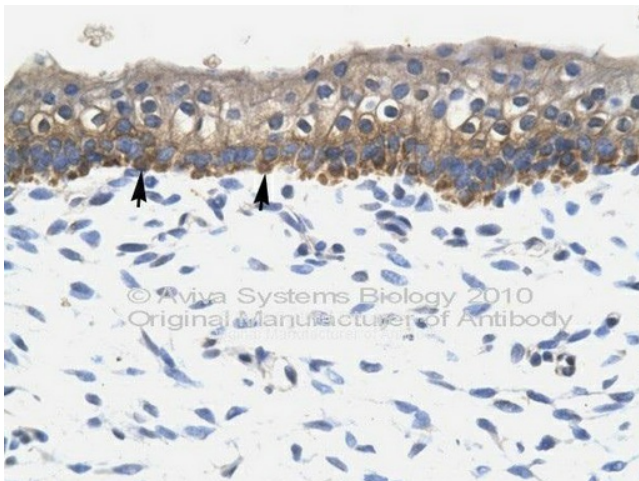
SOX10 antibody - middle region validated by WB using Hek 293 Whole Cell Lysate at 1:4,000.



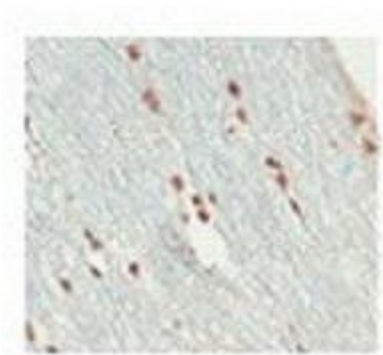
Host: Rabbit; Target Name: SOX10; Sample Tissue: Jurkat cell lysates; Lane A: Primary Antibody; Lane B: Primary Antibody + Blocking Peptide ; Primary Antibody Concentration:2.5 ug/ml; Peptide Concentration: 4.0ug/ml; Lysate Quantity: 25ug/lane; Gel Concen



Immunohistochemistry with Skin tissue at an antibody concentration of 4-8 ug/ml using anti-SOX10 antibody



Immunohistochemistry with Kidney lysate tissue at an antibody concentration of 4-8 ug/ml using anti-SOX10 antibody



A/ [IHC-PZ] (optimal processing) human optic nerve (short post mortem interval) fixed by immersion in zinc-based fixative (BD Pharmingen 552658), processed to minimize antigen loss (shortened protocol, reduced exposure to high temperature); embedded in pa