

## Product datasheet for **TA333903**

### SOX22 (SOX12) Rabbit Polyclonal Antibody

#### Product data:

Product Type:	Primary Antibodies
Applications:	WB
Recommended Dilution:	WB
Reactivity:	Human
Host:	Rabbit
Isotype:	IgG
Clonality:	Polyclonal
Immunogen:	The immunogen for Anti-SOX12 Antibody: synthetic peptide directed towards the C terminal of human SOX12. Synthetic peptide located within the following region: DCSALDRDPDLQPPSGTSHFEFPDYCTPEVTEMIAGDWRPSSIADLVFTY
Formulation:	Liquid. Purified antibody supplied in 1x PBS buffer with 0.09% (w/v) sodium azide and 2% sucrose.
Purification:	Affinity Purified
Conjugation:	Unconjugated
Storage:	Store at -20°C as received.
Stability:	Stable for 12 months from date of receipt.
Predicted Protein Size:	34 kDa
Gene Name:	SRY-box 12
Database Link:	<a href="#">NP_008874</a> <a href="#">Entrez Gene 6666 Human</a> <a href="#">O15370</a>



[View online »](#)

**Background:**

Members of the SOX family of transcription factors are characterized by the presence of a DNA-binding high mobility group (HMG) domain, homologous to the HMG box of sex-determining region Y (SRY). Forming a subgroup of the HMG domain superfamily, SOX proteins have been implicated in cell fate decisions in a diverse range of developmental processes. SOX transcription factors have diverse tissue-specific expression patterns during early development and have been proposed to act as target-specific transcription factors and/or as chromatin structure regulatory elements. The SOX12 gene encodes a protein that was identified as a SOX family member based on conserved domains and its expression in various tissues suggests a role in both differentiation and maintenance of several cell types.

**Synonyms:**

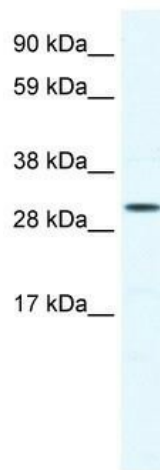
SOX22

**Note:**

Immunogen sequence homology: Human: 100%; Dog: 92%; Pig: 92%; Rat: 92%; Horse: 92%; Mouse: 92%; Guinea pig: 85%

**Protein Families:**

ES Cell Differentiation/IPS, Transcription Factors

**Product images:**

WB Suggested Anti-SOX12 Antibody Titration: 0.2-1 ug/ml; ELISA Titer: 1:62500; Positive Control: Jurkat cell lysate