

Product datasheet for **TA333901**

ZBTB25 Rabbit Polyclonal Antibody

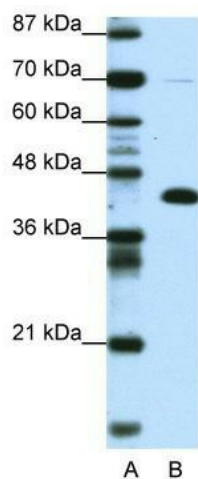
Product data:

Product Type:	Primary Antibodies
Applications:	WB
Recommended Dilution:	WB
Reactivity:	Human
Host:	Rabbit
Isotype:	IgG
Clonality:	Polyclonal
Immunogen:	The immunogen for Anti-ZBTB25 Antibody: synthetic peptide directed towards the middle region of human ZBTB25. Synthetic peptide located within the following region: ADQQRACPATQALEEHQKPPVSIKQERCDPESVISQSHSPSPSSEVTGPTF
Formulation:	Liquid. Purified antibody supplied in 1x PBS buffer with 0.09% (w/v) sodium azide and 2% sucrose.
Purification:	Affinity Purified
Conjugation:	Unconjugated
Storage:	Store at -20°C as received.
Stability:	Stable for 12 months from date of receipt.
Predicted Protein Size:	49 kDa
Gene Name:	zinc finger and BTB domain containing 25
Database Link:	NP_008908 Entrez Gene 7597 Human P24278
Background:	ZBTB25 contains 1 BTB (POZ) domain and 2 C2H2-type zinc fingers and belongs to the krueppel C2H2-type zinc-finger protein family. ZBTB25 may be involved in transcriptional regulation.
Synonyms:	C14orf51; KUP; ZNF46
Note:	Immunogen sequence homology: Dog: 100%; Pig: 100%; Horse: 100%; Human: 100%; Bovine: 100%; Rat: 92%; Mouse: 92%; Guinea pig: 85%


[View online »](#)

Protein Families: Transcription Factors

Product images:



WB Suggested Anti-ZBTB25 Antibody Titration:
0.2-1 ug/ml; Positive Control: Transfected 293T