

Product datasheet for **TA333900**

Claudin 10 (CLDN10) Rabbit Polyclonal Antibody

Product data:

Product Type:	Primary Antibodies
Applications:	WB
Recommended Dilution:	WB
Reactivity:	Human
Host:	Rabbit
Isotype:	IgG
Clonality:	Polyclonal
Immunogen:	The immunogen for Anti-CLDN10 Antibody: synthetic peptide directed towards the C terminal of human CLDN10. Synthetic peptide located within the following region: MASTASEIIAFMVSISGWVLVSSTLPTDYWKVSTIDGTVITTATYWANLW
Formulation:	Liquid. Purified antibody supplied in 1x PBS buffer with 0.09% (w/v) sodium azide and 2% sucrose. <i>Note that this product is shipped as lyophilized powder to China customers.</i>
Purification:	Affinity Purified
Conjugation:	Unconjugated
Storage:	Store at -20°C as received.
Stability:	Stable for 12 months from date of receipt.
Predicted Protein Size:	24 kDa
Gene Name:	claudin 10
Database Link:	NP_008915 Entrez Gene 9071 Human P78369
Background:	CLDN10 encodes a member of the claudin family. Claudins are integral membrane proteins and components of tight junction strands. Tight junction strands serve as a physical barrier to prevent solutes and water from passing freely through the paracellular space between epithelial or endothelial cell sheets.
Synonyms:	CPETRL3; OSP-L



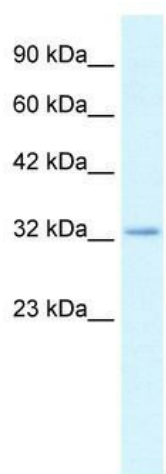
[View online »](#)

Note: Immunogen sequence homology: Human: 100%; Pig: 93%; Rat: 93%; Horse: 93%; Guinea pig: 93%; Mouse: 87%; Rabbit: 87%

Protein Families: Transmembrane

Protein Pathways: Cell adhesion molecules (CAMs), Leukocyte transendothelial migration, Tight junction

Product images:



WB Suggested Anti-CLDN10 Antibody Titration:
2.5 ug/ml; Positive Control: Daudi cell lysate