

## Product datasheet for **TA333899**

### SLC35D2 Rabbit Polyclonal Antibody

#### Product data:

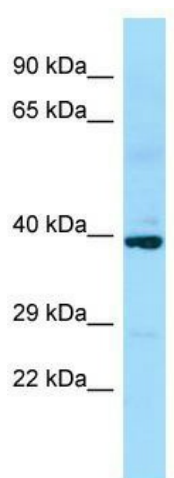
Product Type:	Primary Antibodies
Applications:	WB
Recommended Dilution:	WB
Reactivity:	Human
Host:	Rabbit
Isotype:	IgG
Clonality:	Polyclonal
Immunogen:	The immunogen for Anti-SLC35D2 Antibody is: synthetic peptide directed towards the C-terminal region of Human SLC35D2. Synthetic peptide located within the following region: LIGGDYIFSLNLFVGLNICMAGGLRYSFLTSSQLKPKPVGEENICLDLK
Formulation:	Liquid. Purified antibody supplied in 1x PBS buffer with 0.09% (w/v) sodium azide and 2% sucrose. <i>Note that this product is shipped as lyophilized powder to China customers.</i>
Purification:	Affinity Purified
Conjugation:	Unconjugated
Storage:	Store at -20°C as received.
Stability:	Stable for 12 months from date of receipt.
Predicted Protein Size:	37 kDa
Gene Name:	solute carrier family 35 member D2
Database Link:	<a href="#">NP_008932</a> <a href="#">Entrez Gene 11046 Human Q76EJ3</a>
Background:	Nucleotide sugars, which are synthesized in the cytosol or the nucleus, are high-energy donor substrates for glycosyltransferases located in the lumen of the endoplasmic reticulum and Golgi apparatus. Translocation of nucleotide sugars from the cytosol into the lumen compartment is mediated by specific nucleotide sugar transporters, such as SLC35D2.
Synonyms:	hfrc; HFRC1; SQV7L; UGTrel8
Note:	Immunogen sequence homology: Human: 100%; Pig: 87%; Mouse: 86%; Bovine: 80%



[View online »](#)

Protein Families: Transmembrane

### Product images:



WB Suggested Anti-SLC35D2 Antibody; Titration:  
1.0 ug/ml; Positive Control: Placenta