

Product datasheet for **TA333895**

SLC6A14 Rabbit Polyclonal Antibody

Product data:

Product Type:	Primary Antibodies
Applications:	WB
Recommended Dilution:	WB
Reactivity:	Human
Host:	Rabbit
Isotype:	IgG
Clonality:	Polyclonal
Immunogen:	The immunogen for Anti-SLC6A14 Antibody: synthetic peptide directed towards the middle region of human SLC6A14. Synthetic peptide located within the following region: VFAGFAIFSILGHMAHISGKEVSQVVKSGFDLAFIAYPEALQPLGGPFW
Formulation:	Liquid. Purified antibody supplied in 1x PBS buffer with 0.09% (w/v) sodium azide and 2% sucrose.
Purification:	Affinity Purified
Conjugation:	Unconjugated
Storage:	Store at -20°C as received.
Stability:	Stable for 12 months from date of receipt.
Predicted Protein Size:	72 kDa
Gene Name:	solute carrier family 6 member 14
Database Link:	NP_009162 Entrez Gene 11254 Human Q9UN76
Background:	This gene encodes a member of the solute carrier family 6. Members of this family are sodium and chloride dependent neurotransmitter transporters. The encoded protein transports both neutral and cationic amino acids. This protein may also function as a beta-alanine carrier. Mutations in this gene may be associated with X-linked obesity. A pseudogene of this gene is found on chromosome X. [provided by RefSeq, May 2010]
Synonyms:	BMIQ11

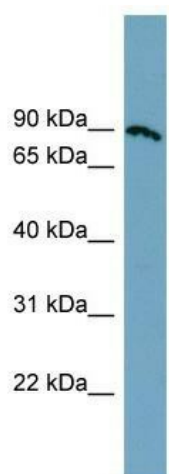


[View online »](#)

Note: Immunogen sequence homology: Dog: 100%; Pig: 100%; Rat: 100%; Horse: 100%; Human: 100%; Mouse: 100%; Rabbit: 100%; Bovine: 93%; Guinea pig: 86%

Protein Families: Druggable Genome, Transmembrane

Product images:



WB Suggested Anti-SLC6A14 Antibody Titration:
0.2-1 ug/ml; Positive Control: COLO205 cell lysate