

Product datasheet for **TA333894**

SLCO2B1 Rabbit Polyclonal Antibody

Product data:

Product Type:	Primary Antibodies
Applications:	IHC, WB
Recommended Dilution:	WB
Reactivity:	Human
Host:	Rabbit
Isotype:	IgG
Clonality:	Polyclonal
Immunogen:	The immunogen for Anti-SLCO2B1 Antibody: synthetic peptide directed towards the N terminal of human SLCO2B1. Synthetic peptide located within the following region: DPQDVRPSVFHNIKLFVLCHSLLQLAQLMISGYLKSSISTVEKRFGSSQ
Formulation:	Liquid. Purified antibody supplied in 1x PBS buffer with 0.09% (w/v) sodium azide and 2% sucrose. <i>Note that this product is shipped as lyophilized powder to China customers.</i>
Purification:	Affinity Purified
Conjugation:	Unconjugated
Storage:	Store at -20°C as received.
Stability:	Stable for 12 months from date of receipt.
Predicted Protein Size:	77 kDa
Gene Name:	solute carrier organic anion transporter family member 2B1
Database Link:	NP_009187 Entrez Gene 11309 Human O94956
Background:	SLCO2B1 mediates the Na ⁺ -independent transport of organic anions such as taurocholate, the prostaglandins PGD ₂ , PGE ₁ , PGE ₂ , leukotriene C ₄ , thromboxane B ₂ and iloprost.
Synonyms:	OATP-B; OATP2B1; OATPB; SLC21A9
Note:	Immunogen sequence homology: Dog: 100%; Pig: 100%; Rat: 100%; Human: 100%; Mouse: 100%; Bovine: 100%; Rabbit: 100%; Guinea pig: 100%; Horse: 93%; Zebrafish: 79%

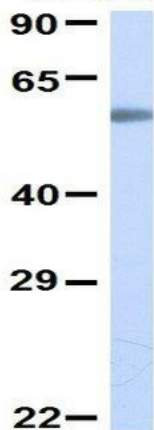


[View online »](#)

Protein Families: Transmembrane

Product images:

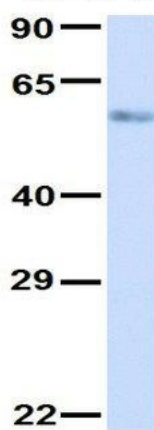
SLCO2B1



Rabbit Anti-SLCO2B1
 Sample Type: Human Fetal Lung
 Antibody Concentration: 1ug/mL

Host: Rabbit; Target Name: SLCO2B1; Sample
 Tissue: Human Fetal Lung; Antibody Dilution: 1.0
 ug/ml

SLCO2B1

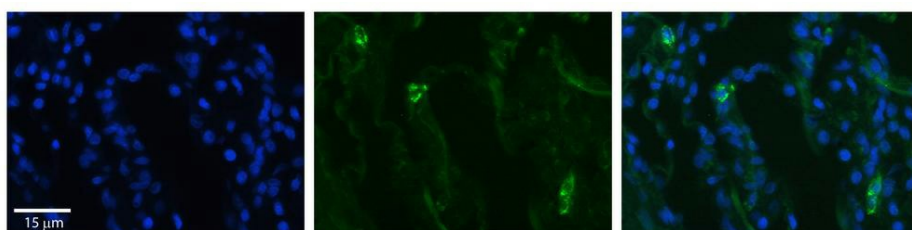


Rabbit Anti-SLCO2B1
 Sample Type: Human Adult
 Placenta
 Antibody Concentration: 1ug/mL

Host: Rabbit; Target Name: SLCO2B1; Sample
 Tissue: Human Adult Placenta; Antibody Dilution:
 1.0 ug/ml



WB Suggested Anti-SLCO2B1 Antibody Titration: 0.2-1 ug/ml; ELISA Titer: 1:62500; Positive Control: HepG2 cell lysate; SLCO2B1 is strongly supported by BioGPS gene expression data to be expressed in Human HepG2 cells



Rabbit Anti-SLCO2B1 Antibody; Formalin Fixed Paraffin Embedded Tissue: Human Lung Tissue; Observed Staining: Membrane in alveolar type I cells; Primary Antibody Concentration: 1:100; Other Working Concentrations: 1/600; Secondary Antibody: Donkey anti-Rab