

Product datasheet for **TA333893**

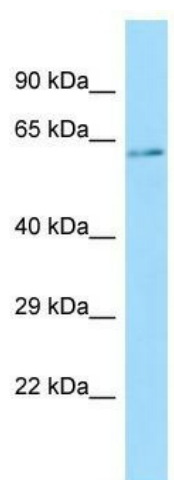
FKBP9 Rabbit Polyclonal Antibody

Product data:

Product Type:	Primary Antibodies
Applications:	WB
Recommended Dilution:	WB
Reactivity:	Human
Host:	Rabbit
Isotype:	IgG
Clonality:	Polyclonal
Immunogen:	The immunogen for Anti-FKBP9 Antibody is: synthetic peptide directed towards the C-terminal region of Human FKBP9. Synthetic peptide located within the following region: VASGKGKLAPGFDAELIVKNMFTNQDRNGDGKVTAEFKLDQEAKHDEL
Formulation:	Liquid. Purified antibody supplied in 1x PBS buffer with 0.09% (w/v) sodium azide and 2% sucrose.
Purification:	Affinity Purified
Conjugation:	Unconjugated
Storage:	Store at -20°C as received.
Stability:	Stable for 12 months from date of receipt.
Predicted Protein Size:	60 kDa
Gene Name:	FK506 binding protein 9
Database Link:	NP_009201 Entrez Gene 11328 Human O95302
Background:	PPIases accelerate the folding of proteins during protein synthesis.
Synonyms:	FKBP60; FKBP63; PPIase
Note:	Immunogen sequence homology: Dog: 100%; Horse: 100%; Human: 100%; Mouse: 100%; Rabbit: 100%; Pig: 93%; Rat: 93%; Bovine: 93%; Guinea pig: 93%
Protein Families:	Druggable Genome



[View online »](#)

Product images:


Host: Rabbit; Target Name: FKBP9; Sample
Tissue: 293T Whole Cell lysates; Antibody
Dilution: 1.0 ug/ml