

Product datasheet for **TA333892**

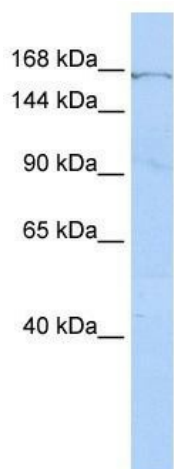
ZNF236 Rabbit Polyclonal Antibody

Product data:

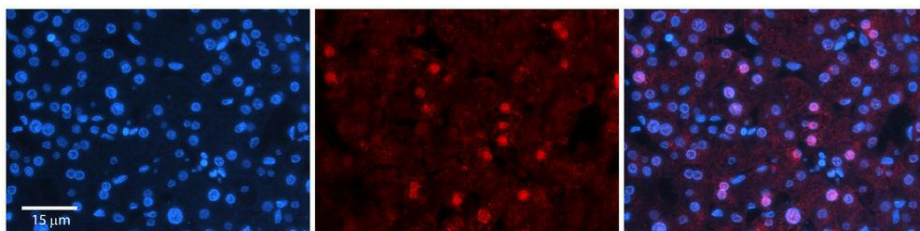
Product Type:	Primary Antibodies
Applications:	IHC, WB
Recommended Dilution:	WB, IHC
Reactivity:	Human
Host:	Rabbit
Isotype:	IgG
Clonality:	Polyclonal
Immunogen:	The immunogen for Anti-ZNF236 Antibody: synthetic peptide directed towards the middle region of human ZNF236. Synthetic peptide located within the following region: VSATGETEGGDICMEEEEEHSDRNASRKS RPEVITFTEEETAQLAKIRPQ
Formulation:	Liquid. Purified antibody supplied in 1x PBS buffer with 0.09% (w/v) sodium azide and 2% sucrose. <i>Note that this product is shipped as lyophilized powder to China customers.</i>
Purification:	Affinity Purified
Conjugation:	Unconjugated
Storage:	Store at -20°C as received.
Stability:	Stable for 12 months from date of receipt.
Predicted Protein Size:	204 kDa
Gene Name:	zinc finger protein 236
Database Link:	NP_031371 Entrez Gene 7776 Human Q9UL36
Background:	ZNF236 belongs to the krueppel C2H2-type zinc-finger protein family. It contains 30 C2H2-type zinc fingers. ZNF236 may be involved in transcriptional regulation.
Synonyms:	ZNF236A; ZNF236B
Note:	Immunogen sequence homology: Pig: 100%; Rat: 100%; Human: 100%; Rabbit: 100%; Guinea pig: 100%; Dog: 93%; Horse: 93%; Mouse: 93%; Bovine: 93%



[View online »](#)

Product images:

WB Suggested Anti-ZNF236 Antibody Titration:
0.2-1 ug/ml; ELISA Titer: 1:1562500; Positive
Control: HepG2 cell lysate ZNF236 is supported by
BioGPS gene expression data to be expressed in
HepG2



Rabbit Anti-ZNF236 Antibody; Formalin Fixed
Paraffin Embedded Tissue: Human Adult Liver;
Observed Staining: Nuclear in hepatocytes,
moderate signal, moderate tissue distribution;
Primary Antibody Concentration: 1:100;
Secondary Antibody: Donkey anti-Rabb