

## Product datasheet for **TA333891**

### Gk Rabbit Polyclonal Antibody

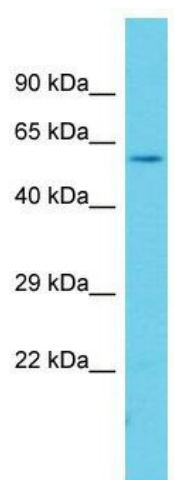
#### Product data:

Product Type:	Primary Antibodies
Applications:	WB
Recommended Dilution:	WB
Reactivity:	Mouse
Host:	Rabbit
Isotype:	IgG
Clonality:	Polyclonal
Immunogen:	The immunogen for Anti-Gyk Antibody is: synthetic peptide directed towards the N-terminal region of Mouse Gyk. Synthetic peptide located within the following region: DKVTGEPLYNAVWLDLRTQSTVENLSKRIPGNNNFVKSKTGLPLSTYFS
Formulation:	Liquid. Purified antibody supplied in 1x PBS buffer with 0.09% (w/v) sodium azide and 2% sucrose. <i>Note that this product is shipped as lyophilized powder to China customers.</i>
Purification:	Affinity Purified
Conjugation:	Unconjugated
Storage:	Store at -20°C as received.
Stability:	Stable for 12 months from date of receipt.
Predicted Protein Size:	58 kDa
Gene Name:	glycerol kinase
Database Link:	<a href="#">NP_032220</a> <a href="#">Entrez Gene 14933 Mouse</a> <a href="#">Q64516</a>
Background:	The function of this protein remains unknown.
Synonyms:	GK1; GKD; glycerokinase
Note:	Immunogen sequence homology: Human: 100%; Bovine: 100%; Dog: 93%; Pig: 93%; Rat: 93%; Horse: 93%; Mouse: 93%; Rabbit: 93%; Guinea pig: 93%; Zebrafish: 91%



[View online »](#)

## Product images:



Host: Rabbit; Target Name: Gyk; Sample Tissue: Mouse Stomach lysates; Antibody Dilution: 1.0 ug/ml