

Product datasheet for **TA333890**

Sstr4 Rabbit Polyclonal Antibody

Product data:

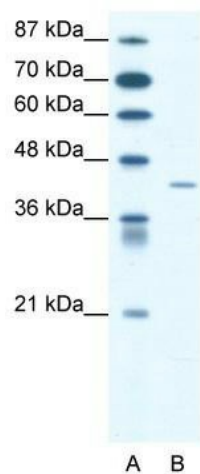
| | |
|-------------------------|---|
| Product Type: | Primary Antibodies |
| Applications: | WB |
| Recommended Dilution: | WB |
| Reactivity: | Human |
| Host: | Rabbit |
| Isotype: | IgG |
| Clonality: | Polyclonal |
| Immunogen: | The immunogen for Anti-SSTR4 Antibody: synthetic peptide directed towards the middle region of human SSTR4. Synthetic peptide located within the following region: AKLINLGVWLASLLVTLPIAIFADTRPARGGQAVACNLQWPHPAWSAVFV |
| Formulation: | Liquid. Purified antibody supplied in 1x PBS buffer with 0.09% (w/v) sodium azide and 2% sucrose. <i>Note that this product is shipped as lyophilized powder to China customers.</i> |
| Purification: | Affinity Purified |
| Conjugation: | Unconjugated |
| Storage: | Store at -20°C as received. |
| Stability: | Stable for 12 months from date of receipt. |
| Predicted Protein Size: | 42 kDa |
| Gene Name: | somatostatin receptor 4 |
| Database Link: | NP_033245 Entrez Gene 6754 Human P49660 |
| Background: | Somatostatin acts at many sites to inhibit the release of many hormones and other secretory proteins. The biologic effects of somatostatin are probably mediated by a family of G protein-coupled receptors that are expressed in a tissue-specific manner. SSTR4 is a member of the superfamily of receptors having seven transmembrane segments and is expressed in highest levels in fetal and adult brain and lung. |
| Synonyms: | SS4R |



[View online »](#)

Note: Immunogen sequence homology: Mouse: 85%; Rabbit: 78%

Product images:



WB Suggested Anti-SSTR4 Antibody; Titration:
1.25 ug/ml; Positive Control: Jurkat Whole Cell