

Product datasheet for **TA333889**

Sstr4 Rabbit Polyclonal Antibody

Product data:

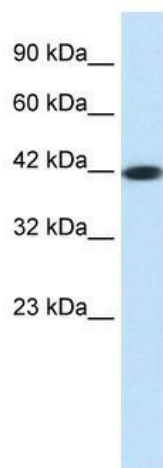
Product Type:	Primary Antibodies
Applications:	WB
Recommended Dilution:	WB
Reactivity:	Human
Host:	Rabbit
Isotype:	IgG
Clonality:	Polyclonal
Immunogen:	The immunogen for Anti-SSTR4 Antibody: synthetic peptide directed towards the middle region of human SSTR4. Synthetic peptide located within the following region: AKLINLGVWLASLLVTLPIAIFADTRPARGGQAVACNLQWPHPAWSAVFV
Formulation:	Liquid. Purified antibody supplied in 1x PBS buffer with 0.09% (w/v) sodium azide and 2% sucrose. <i>Note that this product is shipped as lyophilized powder to China customers.</i>
Purification:	Affinity Purified
Conjugation:	Unconjugated
Storage:	Store at -20°C as received.
Stability:	Stable for 12 months from date of receipt.
Predicted Protein Size:	42 kDa
Gene Name:	somatostatin receptor 4
Database Link:	NP_033245 Entrez Gene 6754 Human P49660
Background:	Somatostatin acts at many sites to inhibit the release of many hormones and other secretory proteins. The biologic effects of somatostatin are probably mediated by a family of G protein-coupled receptors that are expressed in a tissue-specific manner. SSTR4 is a member of the superfamily of receptors having seven transmembrane segments and is expressed in highest levels in fetal and adult brain and lung.
Synonyms:	SS4R



[View online »](#)

Note: Immunogen sequence homology: Mouse: 85%; Rabbit: 78%

Product images:



WB Suggested Anti-SSTR4 Antibody Titration: 0.2-1 ug/ml; ELISA Titer: 1:62500; Positive Control: Jurkat cell lysate