

Product datasheet for **TA333887**

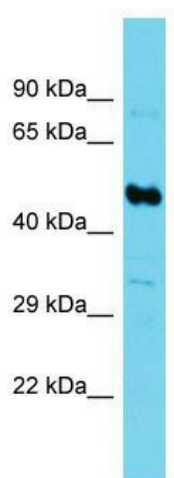
Suc1g2 Rabbit Polyclonal Antibody

Product data:

Product Type:	Primary Antibodies
Applications:	WB
Recommended Dilution:	WB
Reactivity:	Mouse
Host:	Rabbit
Isotype:	IgG
Clonality:	Polyclonal
Immunogen:	The immunogen for Anti-Suc1g2 Antibody is: synthetic peptide directed towards the N-terminal region of Mouse Suc1g2. Synthetic peptide located within the following region: LKGGVHLTKDPKVVGELAQQMIGYNLTKQTPKEGVKVNKVMVAEALDIS
Formulation:	Liquid. Purified antibody supplied in 1x PBS buffer with 0.09% (w/v) sodium azide and 2% sucrose. <i>Note that this product is shipped as lyophilized powder to China customers.</i>
Purification:	Affinity Purified
Conjugation:	Unconjugated
Storage:	Store at -20°C as received.
Stability:	Stable for 12 months from date of receipt.
Predicted Protein Size:	48 kDa
Gene Name:	succinate-Coenzyme A ligase, GDP-forming, beta subunit
Database Link:	NP_035637 Entrez Gene 20917 Mouse Q9Z2I8
Background:	Suc1g2 catalyzes the GTP-dependent ligation of succinate and CoA to form succinyl-CoA.
Synonyms:	G-BETA; SCS-betaG
Note:	Immunogen sequence homology: Dog: 100%; Pig: 100%; Rat: 100%; Horse: 100%; Human: 100%; Mouse: 100%; Bovine: 100%; Rabbit: 100%; Guinea pig: 100%; Zebrafish: 92%



[View online »](#)

Product images:

Host: Rabbit; Target Name: Suc1g2; Sample
Tissue: Mouse Kidney lysates; Antibody Dilution:
1.0 ug/ml