

Product datasheet for **TA333886**

Tuft1 Rabbit Polyclonal Antibody

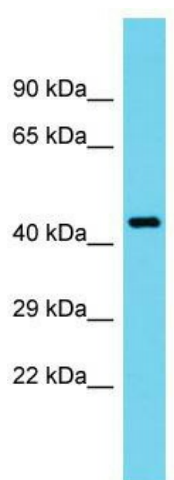
Product data:

Product Type:	Primary Antibodies
Applications:	WB
Recommended Dilution:	WB
Reactivity:	Mouse
Host:	Rabbit
Isotype:	IgG
Clonality:	Polyclonal
Immunogen:	The immunogen for Anti-Tuft1 Antibody is: synthetic peptide directed towards the middle region of Mouse Tuft1. Synthetic peptide located within the following region: LSRYQREAEQSNVALQREEDRVEQKAAEIEELQRLLGMEAEHQALLVKV
Formulation:	Liquid. Purified antibody supplied in 1x PBS buffer with 0.09% (w/v) sodium azide and 2% sucrose. <i>Note that this product is shipped as lyophilized powder to China customers.</i>
Purification:	Affinity Purified
Conjugation:	Unconjugated
Storage:	Store at -20°C as received.
Stability:	Stable for 12 months from date of receipt.
Predicted Protein Size:	43 kDa
Gene Name:	tuftelin 1
Database Link:	NP_035786 Entrez Gene 22156 Mouse O08970
Background:	Tuft1 is involved in the mineralization and structural organization of enamel.
Synonyms:	TUFT1
Note:	Immunogen sequence homology: Human: 100%; Pig: 93%; Guinea pig: 92%; Rat: 86%; Horse: 86%; Mouse: 86%; Bovine: 86%; Rabbit: 86%; Dog: 79%; Zebrafish: 75%



[View online »](#)

Product images:



Host: Rabbit; Target Name: Tuft1; Sample Tissue: Mouse Kidney lysates; Antibody Dilution: 1.0 ug/ml