

Product datasheet for **TA333885**

Usp12 Rabbit Polyclonal Antibody

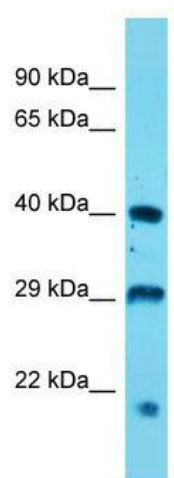
Product data:

Product Type:	Primary Antibodies
Applications:	WB
Recommended Dilution:	WB
Reactivity:	Mouse
Host:	Rabbit
Isotype:	IgG
Clonality:	Polyclonal
Immunogen:	The immunogen for Anti-Usp12 Antibody is: synthetic peptide directed towards the N-terminal region of Mouse Usp12. Synthetic peptide located within the following region: HSIATQKKKVGVIPPKKFITRLRKENELFDNYMQQDAHEFLNYLLNTIAD
Formulation:	Liquid. Purified antibody supplied in 1x PBS buffer with 0.09% (w/v) sodium azide and 2% sucrose. <i>Note that this product is shipped as lyophilized powder to China customers.</i>
Purification:	Affinity Purified
Conjugation:	Unconjugated
Storage:	Store at -20°C as received.
Stability:	Stable for 12 months from date of receipt.
Predicted Protein Size:	41 kDa
Gene Name:	ubiquitin specific peptidase 12
Database Link:	NP_035799 Entrez Gene 22217 Mouse Q9D9M2
Background:	Usp12 is a deubiquitinating enzyme. It has almost no deubiquitinating activity by itself and requires the interaction with WDR48 to have a high activity. It is not involved in deubiquitination of monoubiquitinated FANCD2.
Synonyms:	UBH1; USP12L1
Note:	Immunogen sequence homology: Dog: 100%; Pig: 100%; Rat: 100%; Horse: 100%; Human: 100%; Mouse: 100%; Bovine: 100%; Rabbit: 100%; Zebrafish: 100%; Guinea pig: 100%



[View online »](#)

Product images:



Host: Rabbit; Target Name: Usp12; Sample
Tissue: Mouse Stomach lysates; Antibody
Dilution: 1.0 ug/ml