

Product datasheet for **TA333883**

SLC35A3 Rabbit Polyclonal Antibody

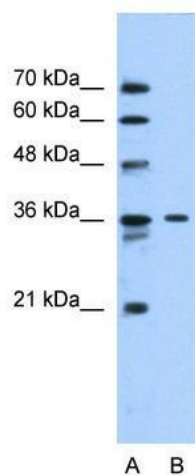
Product data:

Product Type:	Primary Antibodies
Applications:	WB
Recommended Dilution:	WB
Reactivity:	Human
Host:	Rabbit
Isotype:	IgG
Clonality:	Polyclonal
Immunogen:	The immunogen for Anti-SLC35A3 Antibody: synthetic peptide directed towards the middle region of human SLC35A3. Synthetic peptide located within the following region: VAFVQWPSDSQLDSKELSAGSQFVGLMAVLTACFSSGFAGVYFEKILKET
Formulation:	Liquid. Purified antibody supplied in 1x PBS buffer with 0.09% (w/v) sodium azide and 2% sucrose.
Purification:	Affinity Purified
Conjugation:	Unconjugated
Storage:	Store at -20°C as received.
Stability:	Stable for 12 months from date of receipt.
Predicted Protein Size:	36 kDa
Gene Name:	solute carrier family 35 member A3
Database Link:	NP_036375 Entrez Gene 23443 Human Q9Y2D2
Background:	SLC35A3 is a uridine diphosphate-N-acetylglucosamine transporter in the Golgi apparatus.
Synonyms:	AMRS
Note:	Immunogen sequence homology: Human: 100%; Dog: 93%; Rat: 93%; Horse: 93%; Rabbit: 93%; Bovine: 87%
Protein Families:	Transmembrane



[View online »](#)

Product images:



WB Suggested Anti-SLC35A3 Antibody Titration:
0.2-1 ug/ml; Positive Control: HepG2 cell lysate