

## Product datasheet for **TA333882**

### ZNF212 Rabbit Polyclonal Antibody

#### Product data:

Product Type:	Primary Antibodies
Applications:	IHC, WB
Recommended Dilution:	WB, IHC
Reactivity:	Human
Host:	Rabbit
Isotype:	IgG
Clonality:	Polyclonal
Immunogen:	The immunogen for Anti-ZNF212 Antibody: synthetic peptide directed towards the N terminal of human ZNF212. Synthetic peptide located within the following region: RSLNDGVCFTEQEWENLEDWQKELYRNVMSNYETLVSLKVLGQTEGEA
Formulation:	Liquid. Purified antibody supplied in 1x PBS buffer with 0.09% (w/v) sodium azide and 2% sucrose. <i>Note that this product is shipped as lyophilized powder to China customers.</i>
Purification:	Affinity Purified
Conjugation:	Unconjugated
Storage:	Store at -20°C as received.
Stability:	Stable for 12 months from date of receipt.
Predicted Protein Size:	55 kDa
Gene Name:	zinc finger protein 212
Database Link:	<a href="#">NP_036388</a> <a href="#">Entrez Gene 7988 Human</a> <a href="#">Q9UDV6</a>
Background:	ZNF212 belongs to the C2H2-type zinc finger gene family. The zinc finger proteins are involved in gene regulation and development, and are quite conserved throughout evolution. Like this gene product, a third of the zinc finger proteins containing C2H2 fingers also contain the KRAB domain, which has been found to be involved in protein-protein interactions.
Synonyms:	C2H2-150; ZNF182; ZNFC150



[View online »](#)

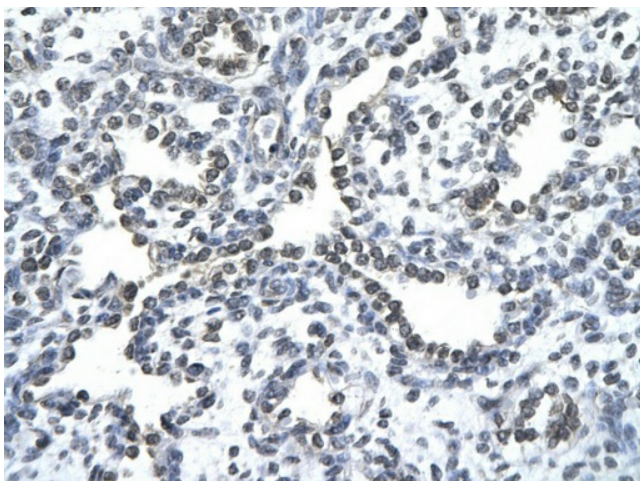
**Note:** Immunogen sequence homology: Dog: 100%; Rat: 100%; Horse: 100%; Human: 100%; Mouse: 100%; Bovine: 100%; Pig: 92%; Rabbit: 92%

**Protein Families:** Transcription Factors

**Product images:**



WB Suggested Anti-ZNF212 Antibody Titration: 0.2-1 ug/ml; Positive Control: Jurkat cell lysate



Rabbit Anti-ZNF212 antibody; Paraffin Embedded Tissue: Human Lung cell Cellular Data: alveolar cell of renal tubule; Antibody Concentration: 4.0-8.0 ug/ml; Magnification: 400X