

Product datasheet for **TA333881**

ZNF212 Rabbit Polyclonal Antibody

Product data:

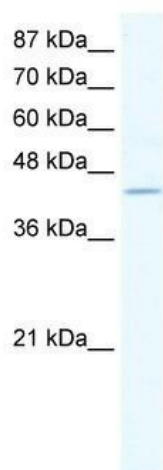
Product Type:	Primary Antibodies
Applications:	WB
Recommended Dilution:	WB
Reactivity:	Human
Host:	Rabbit
Isotype:	IgG
Clonality:	Polyclonal
Immunogen:	The immunogen for Anti-ZNF212 Antibody: synthetic peptide directed towards the C terminal of human ZNF212. Synthetic peptide located within the following region: EGPSAGQHVQERFSPNSLVALPGHIPWRKSRSSLICGYCGKSFSPDLV
Formulation:	Liquid. Purified antibody supplied in 1x PBS buffer with 0.09% (w/v) sodium azide and 2% sucrose.
Purification:	Affinity Purified
Conjugation:	Unconjugated
Storage:	Store at -20°C as received.
Stability:	Stable for 12 months from date of receipt.
Predicted Protein Size:	55 kDa
Gene Name:	zinc finger protein 212
Database Link:	NP_036388 Entrez Gene 7988 Human Q9UDV6
Background:	ZNF212 belongs to the C2H2-type zinc finger gene family. The zinc finger proteins are involved in gene regulation and development, and are quite conserved throughout evolution. Like this gene product, a third of the zinc finger proteins containing C2H2 fingers also contain the KRAB domain, which has been found to be involved in protein-protein interactions.
Synonyms:	C2H2-150; ZNF182; ZNFC150
Note:	Immunogen sequence homology: Human: 100%; Pig: 92%; Dog: 90%; Horse: 86%; Rabbit: 85%; Rat: 83%; Mouse: 83%; Bovine: 79%; Guinea pig: 79%



[View online »](#)

Protein Families: Transcription Factors

Product images:



WB Suggested Anti-ZNF212 Antibody Titration:
1.25 ug/ml; Positive Control: K562 cell lysate