

## Product datasheet for **TA333878**

### SLCO3A1 Rabbit Polyclonal Antibody

#### Product data:

Product Type:	Primary Antibodies
Applications:	WB
Recommended Dilution:	WB
Reactivity:	Human
Host:	Rabbit
Isotype:	IgG
Clonality:	Polyclonal
Immunogen:	The immunogen for Anti-SLCO3A1 Antibody: synthetic peptide directed towards the middle region of human SLCO3A1. Synthetic peptide located within the following region: MEIAVVAGFAAFLGKYLEQQFNLTSSANQLLGMTAIPCACLGIFLGGLL
Formulation:	Liquid. Purified antibody supplied in 1x PBS buffer with 0.09% (w/v) sodium azide and 2% sucrose. <i>Note that this product is shipped as lyophilized powder to China customers.</i>
Purification:	Affinity Purified
Conjugation:	Unconjugated
Storage:	Store at -20°C as received.
Stability:	Stable for 12 months from date of receipt.
Predicted Protein Size:	76 kDa
Gene Name:	solute carrier organic anion transporter family member 3A1
Database Link:	<a href="#">NP_037404</a> <a href="#">Entrez Gene 28232 Human</a> <a href="#">Q9UIG8</a>
Background:	SLCO3A1 mediates the Na <sup>+</sup> -independent transport of organic anions such as estrone-3-sulfate. It mediates transport of prostaglandins (PG) E1 and E2, thyroxine (T4), deltorphin II, BQ-123 and vasopressin, but not DPDPE (a derivative of enkephalin lacking an N-terminal tyrosine residue), estrone-3-sulfate, taurocholate, digoxin nor DHEAS.
Synonyms:	OATP-D; OATP3A1; OATPD; SLC21A11

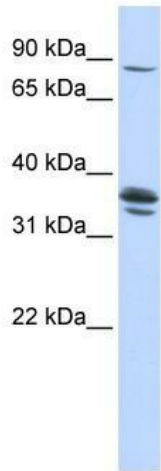


[View online »](#)

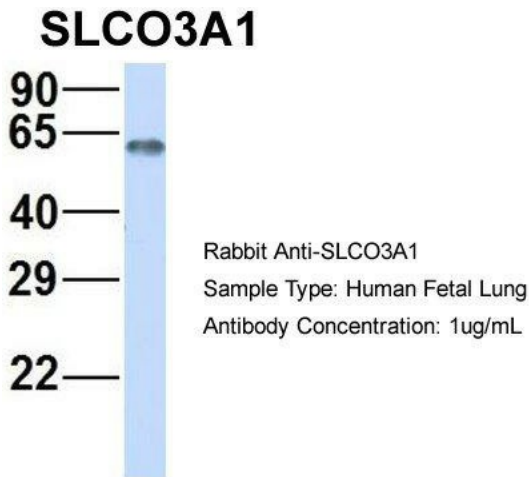
**Note:** Immunogen sequence homology: Dog: 100%; Pig: 100%; Rat: 100%; Horse: 100%; Human: 100%; Mouse: 100%; Bovine: 100%; Rabbit: 100%; Zebrafish: 100%; Guinea pig: 100%

**Protein Families:** Transmembrane

**Product images:**



WB Suggested Anti-SLCO3A1 Antibody Titration:  
0.2-1 ug/ml; ELISA Titer: 1:312500; Positive  
Control: 721\_B cell lysate



Host: Rabbit; Target Name: SLCO3A1; Sample  
Tissue: Human Fetal Lung; Antibody Dilution: 1.0  
ug/ml