

Product datasheet for **TA333876**

SLC16A8 Rabbit Polyclonal Antibody

Product data:

Product Type:	Primary Antibodies
Applications:	IHC, WB
Recommended Dilution:	WB, IHC
Reactivity:	Human
Host:	Rabbit
Isotype:	IgG
Clonality:	Polyclonal
Immunogen:	The immunogen for Anti-SLC16A8 Antibody: synthetic peptide directed towards the middle region of human SLC16A8. Synthetic peptide located within the following region: RAFAVYAVTKFLMALGLFVPAILLVNYAKDAGVPDTDAAFLLSIVGFVDI
Formulation:	Liquid. Purified antibody supplied in 1x PBS buffer with 0.09% (w/v) sodium azide and 2% sucrose. <i>Note that this product is shipped as lyophilized powder to China customers.</i>
Purification:	Affinity Purified
Conjugation:	Unconjugated
Storage:	Store at -20°C as received.
Stability:	Stable for 12 months from date of receipt.
Predicted Protein Size:	55 kDa
Gene Name:	solute carrier family 16 member 8
Database Link:	NP_037488 Entrez Gene 23539 Human O95907
Background:	SLC16A8 is proton-linked monocarboxylate transporter. It catalyzes the rapid transport across the plasma membrane of many monocarboxylates such as lactate, pyruvate, branched-chain oxo acids derived from leucine, valine and isoleucine, and the ketone bodies acetoacetate, beta-hydroxybutyrate and acetate.
Synonyms:	MCT3; REMP

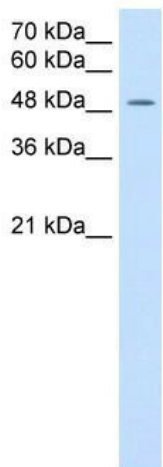


[View online »](#)

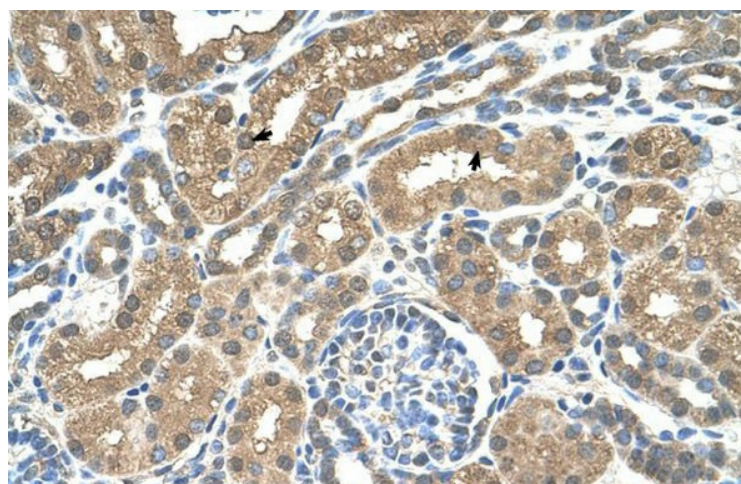
Note: Immunogen sequence homology: Pig: 100%; Human: 100%; Guinea pig: 100%; Rat: 93%; Dog: 92%; Horse: 86%; Mouse: 86%; Bovine: 86%; Rabbit: 86%; Zebrafish: 79%

Protein Families: Transmembrane

Product images:



WB Suggested Anti-SLC16A8 Antibody Titration: 2.5 ug/ml; Positive Control: Jurkat cell lysate



Human kidney