

Product datasheet for **TA333875**

SLC25A24 Rabbit Polyclonal Antibody

Product data:

Product Type:	Primary Antibodies
Applications:	WB
Recommended Dilution:	WB
Reactivity:	Human
Host:	Rabbit
Isotype:	IgG
Clonality:	Polyclonal
Immunogen:	The immunogen for Anti-SLC25A24 Antibody: synthetic peptide directed towards the middle region of human SLC25A24. Synthetic peptide located within the following region: FLFNPVTDIEEIRFWKHSTGIDIGDSLTPDEFTEDEKKSGQWWRQLLA
Formulation:	Liquid. Purified antibody supplied in 1x PBS buffer with 0.09% (w/v) sodium azide and 2% sucrose.
Purification:	Affinity Purified
Conjugation:	Unconjugated
Storage:	Store at -20°C as received.
Stability:	Stable for 12 months from date of receipt.
Predicted Protein Size:	45 kDa
Gene Name:	solute carrier family 25 member 24
Database Link:	NP_037518 Entrez Gene 29957 Human Q6NUK1
Background:	SLC25A24 is a calcium-dependent mitochondrial solute carrier. Mitochondrial solute carriers shuttle metabolites, nucleotides, and cofactors through the mitochondrial inner membrane. It may act as a ATP-Mg/Pi exchanger that mediates the transport of Mg-ATP in exchange for phosphate, catalyzing the net uptake or efflux of adenine nucleotides into or from the mitochondria.
Synonyms:	APC1; SCAMC-1

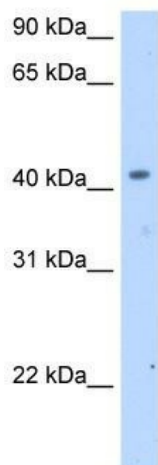


[View online »](#)

Note: Immunogen sequence homology: Dog: 100%; Pig: 100%; Rat: 100%; Horse: 100%; Human: 100%; Mouse: 100%; Bovine: 100%; Guinea pig: 100%; Rabbit: 86%; Zebrafish: 77%

Protein Families: Druggable Genome

Product images:



WB Suggested Anti-SLC25A24 Antibody Titration:
2.5 ug/ml; Positive Control: Human Thymus