

Product datasheet for **TA333874**

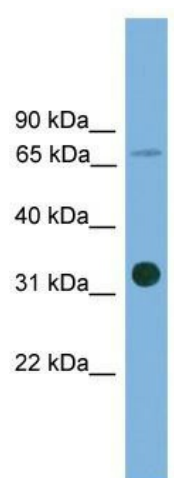
SLC5A4 Rabbit Polyclonal Antibody

Product data:

| | |
|-------------------------|--------------------------------------------------------------------------------------------------------------------------------------------------------------------------------------------------------------------------|
| Product Type: | Primary Antibodies |
| Applications: | WB |
| Recommended Dilution: | WB |
| Reactivity: | Human |
| Host: | Rabbit |
| Isotype: | IgG |
| Clonality: | Polyclonal |
| Immunogen: | The immunogen for Anti-SLC5A4 Antibody: synthetic peptide directed towards the middle region of human SLC5A4. Synthetic peptide located within the following region: LLLTVWSIVWVPLVQVSQNGQLIHYTESSYLGPPIAAVFVLAIFCKRV |
| Formulation: | Liquid. Purified antibody supplied in 1x PBS buffer with 0.09% (w/v) sodium azide and 2% sucrose. |
| Purification: | Affinity Purified |
| Conjugation: | Unconjugated |
| Storage: | Store at -20°C as received. |
| Stability: | Stable for 12 months from date of receipt. |
| Predicted Protein Size: | 72 kDa |
| Gene Name: | solute carrier family 5 member 4 |
| Database Link: | NP_055042 Entrez Gene 6527 Human Q9NY91 |
| Background: | SLC5A4 belongs to the sodium:solute symporter family and is a sodium-dependent glucose transporter. |
| Synonyms: | DJ90G24.4; SAAT1; SGLT3 |
| Note: | Immunogen sequence homology: Human: 100%; Rabbit: 100%; Dog: 86%; Pig: 86%; Rat: 86%; Horse: 86%; Guinea pig: 86%; Mouse: 79%; Bovine: 79% |
| Protein Families: | Transmembrane |



[View online »](#)

Product images:

WB Suggested Anti-SLC5A4 Antibody Titration:
0.2-1 ug/ml; ELISA Titer: 1:1562500; Positive
Control: THP-1 cell lysate